

Product datasheet for **TA340047**

CNN2 Rabbit Polyclonal Antibody

Product data:

Product Type:	Primary Antibodies
Applications:	WB
Recommended Dilution:	WB
Reactivity:	Human
Host:	Rabbit
Isotype:	IgG
Clonality:	Polyclonal
Immunogen:	The immunogen for anti-CNN2 antibody: synthetic peptide directed towards the N terminal of human CNN2. Synthetic peptide located within the following region: MSSTQFNKGPSYGLSAEVKNRLLSKYDPQKEAELRTWIEGLTGLSIGPDF
Formulation:	Liquid. Purified antibody supplied in 1x PBS buffer with 0.09% (w/v) sodium azide and 2% sucrose. <i>Note that this product is shipped as lyophilized powder to China customers.</i>
Concentration:	lot specific
Purification:	Affinity Purified
Conjugation:	Unconjugated
Storage:	Store at -20°C as received.
Stability:	Stable for 12 months from date of receipt.
Predicted Protein Size:	34 kDa
Gene Name:	calponin 2
Database Link:	NP_004359 Entrez Gene 1265 Human Q99439



[View online »](#)

Background:

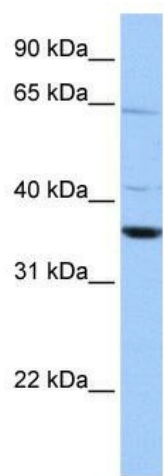
CNN2, which can bind actin, calmodulin, troponin C, and tropomyosin, may function in the structural organization of actin filaments. CNN2 could play a role in smooth muscle contraction and cell adhesion. The protein encoded by this gene, which can bind actin, calmodulin, troponin C, and tropomyosin, may function in the structural organization of actin filaments. The encoded protein could play a role in smooth muscle contraction and cell adhesion. Two transcript variants encoding different isoforms have been found for this gene.

Synonyms:

calponin 2; calponin H2; neutral calponin; smooth muscle

Note:

Immunogen Sequence Homology: Dog: 100%; Pig: 100%; Rat: 100%; Human: 100%; Mouse: 100%; Bovine: 100%; Guinea pig: 100%; Horse: 92%; Rabbit: 92%; Zebrafish: 92%

Product images:

WB Suggested Anti-CNN2 Antibody Titration: 0.2-1 ug/ml; Positive Control: HepG2 cell lysate CNN2 is supported by BioGPS gene expression data to be expressed in HepG2