

## Product datasheet for **TA340044**

### Dctn1 Rabbit Polyclonal Antibody

#### Product data:

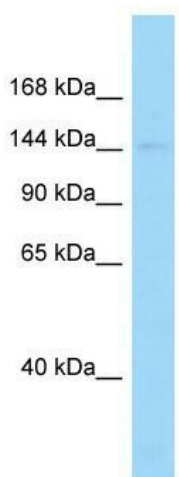
Product Type:	Primary Antibodies
Applications:	WB
Recommended Dilution:	WB
Reactivity:	Rat
Host:	Rabbit
Isotype:	IgG
Clonality:	Polyclonal
Immunogen:	The immunogen for Anti-Dctn1 antibody is: synthetic peptide directed towards the C-terminal region of Rat Dctn1. Synthetic peptide located within the following region: EANVRLSLEKKLDSAAKDADERIEKVQTRLEETQTLLRKKEKEFEETMD
Formulation:	Liquid. Purified antibody supplied in 1x PBS buffer with 0.09% (w/v) sodium azide and 2% sucrose. <i>Note that this product is shipped as lyophilized powder to China customers.</i>
Concentration:	lot specific
Purification:	Affinity Purified
Conjugation:	Unconjugated
Storage:	Store at -20°C as received.
Stability:	Stable for 12 months from date of receipt.
Predicted Protein Size:	140 kDa
Gene Name:	dynactin subunit 1
Database Link:	<a href="#">NP_077044</a> <a href="#">Entrez Gene 29167 Rat P28023</a>
Background:	Dctn1 is a component of dynein microtubule activated ATPase, which acts as a microtubule motor.
Synonyms:	DAP-150; DP-150; HMN7B; OTTHUMP00000202491; P135; p150-glued



[View online »](#)

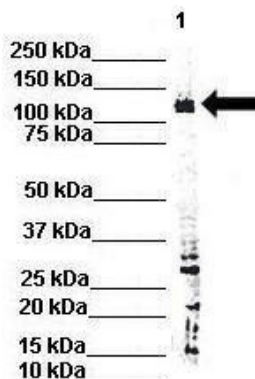
**Note:** Immunogen Sequence Homology: Dog: 100%; Pig: 100%; Rat: 100%; Horse: 100%; Human: 100%; Mouse: 100%; Bovine: 100%; Rabbit: 100%; Guinea pig: 100%; Zebrafish: 93%

**Product images:**



WB Suggested Anti-Dctn1 Antibody; Titration: 1.0 ug/ml; Positive Control: Rat Thymus

**DCTN1**



WB Suggested Anti-Dctn1 Antibody; Positive Control: Lane 1: 80ug rat brain extract; Primary Antibody Dilution: 1: 500; Secondary Antibody: IRDye 800 CW goat anti-rabbit from Li-COR Bioscience; Secondary Antibody Dilution: 1: 20,000; Submitted by: Dr. Yuzh