

## Product datasheet for **TA340043**

### CRYBB3 Rabbit Polyclonal Antibody

#### Product data:

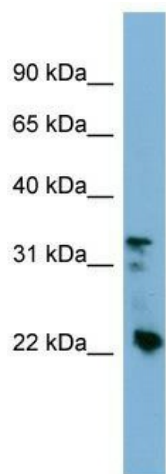
Product Type:	Primary Antibodies
Applications:	WB
Recommended Dilution:	WB
Reactivity:	Human
Host:	Rabbit
Isotype:	IgG
Clonality:	Polyclonal
Immunogen:	The immunogen for anti-CRYBB3 antibody: synthetic peptide directed towards the middle region of human CRYBB3. Synthetic peptide located within the following region: LNIDSPHHKLHLFENPAFSGRKMEIVDDDVP SLWAHGFQDRVASVRAING
Formulation:	Liquid. Purified antibody supplied in 1x PBS buffer with 0.09% (w/v) sodium azide and 2% sucrose. <i>Note that this product is shipped as lyophilized powder to China customers.</i>
Concentration:	lot specific
Purification:	Affinity Purified
Conjugation:	Unconjugated
Storage:	Store at -20°C as received.
Stability:	Stable for 12 months from date of receipt.
Predicted Protein Size:	24 kDa
Gene Name:	crystallin beta B3
Database Link:	<a href="#">NP_004067</a> <a href="#">Entrez Gene 1417 Human P26998</a>
Background:	Crystallins are separated into two classes: taxon-specific, or enzyme, and ubiquitous. The latter class constitutes the major proteins of vertebrate eye lens and maintains the transparency and refractive index of the lens. Since lens central fiber cells l
Synonyms:	CATCN2; CRYB3; CTRCT22



[View online »](#)

**Note:** Immunogen Sequence Homology: Dog: 100%; Rat: 100%; Horse: 100%; Human: 100%; Mouse: 100%; Rabbit: 100%; Pig: 93%; Sheep: 93%; Bovine: 93%; Zebrafish: 79%; Guinea pig: 79%

**Product images:**



WB Suggested Anti-CRYBB3 Antibody Titration:  
0.2-1 ug/ml; ELISA Titer: 1: 12500; Positive  
Control: HT1080 cell lysate