

Product datasheet for **TA340041**

CLK1 Rabbit Polyclonal Antibody

Product data:

Product Type:	Primary Antibodies
Applications:	WB
Recommended Dilution:	WB
Reactivity:	Human
Host:	Rabbit
Isotype:	IgG
Clonality:	Polyclonal
Immunogen:	The immunogen for anti-CLK1 antibody: synthetic peptide directed towards the N terminal of human CLK1. Synthetic peptide located within the following region: HSSAQENKRCKYNHSKMCDSHYLESRSINEKDYHSRRYIDEYRNDYTQGC
Formulation:	Liquid. Purified antibody supplied in 1x PBS buffer with 0.09% (w/v) sodium azide and 2% sucrose. <i>Note that this product is shipped as lyophilized powder to China customers.</i>
Concentration:	lot specific
Purification:	Affinity Purified
Conjugation:	Unconjugated
Storage:	Store at -20°C as received.
Stability:	Stable for 12 months from date of receipt.
Predicted Protein Size:	57 kDa
Gene Name:	CDC like kinase 1
Database Link:	NP_004062 Entrez Gene 1195 Human P49759



[View online »](#)

Background: This gene encodes a member of the CDC2-like (or LAMMER) family of dual specificity protein kinases. In the nucleus, the encoded protein phosphorylates serine/arginine-rich proteins involved in pre-mRNA processing, releasing them into the nucleoplasm. The choice of splice sites during pre-mRNA processing may be regulated by the concentration of transacting factors, including serine/arginine rich proteins. Therefore, the encoded protein may play an indirect role in governing splice site selection. Multiple transcript variants encoding different isoforms have been found for this gene.

Synonyms: CLK; STY

Note: Immunogen Sequence Homology: Dog: 100%; Pig: 100%; Horse: 100%; Human: 100%; Bovine: 100%; Rabbit: 100%; Guinea pig: 100%; Mouse: 86%; Rat: 85%

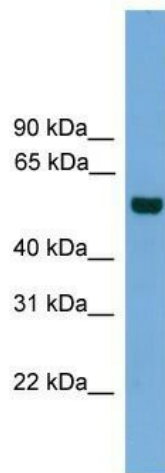
Protein Families: Druggable Genome, Protein Kinase

Product images:

CLK1



Sample type: human microvascular endothelial cells (25ug); Primary Dilution: 1: 1000; Secondary Antibody: Goat anti-Rabbit-HRP; Secondary Dilution: 1: 5000; Image Submitted by: Andreas Eisenreich; Charite Universitatsmedizin Berlin



WB Suggested Anti-CLK1 Antibody Titration: 0.2-1 ug/ml; ELISA Titer: 1: 312500; Positive Control: 293T cell lysate CLK1 is supported by BioGPS gene expression data to be expressed in HEK293T