

## Product datasheet for **TA340040**

### CLK2 Rabbit Polyclonal Antibody

#### Product data:

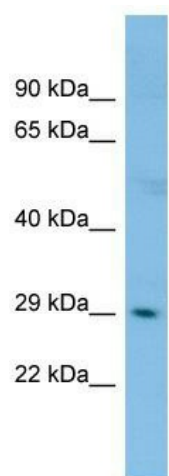
Product Type:	Primary Antibodies
Applications:	WB
Recommended Dilution:	WB
Reactivity:	Human
Host:	Rabbit
Isotype:	IgG
Clonality:	Polyclonal
Immunogen:	The immunogen for Anti-CLK2 antibody is: synthetic peptide directed towards the N-terminal region of Human CLK2. Synthetic peptide located within the following region: KFLHDNKLHTDLKPENILFVNSDYELTYNLEKKRDRSVKSTAVRVVDF
Formulation:	Liquid. Purified antibody supplied in 1x PBS buffer with 0.09% (w/v) sodium azide and 2% sucrose. <i>Note that this product is shipped as lyophilized powder to China customers.</i>
Concentration:	lot specific
Purification:	Affinity Purified
Conjugation:	Unconjugated
Storage:	Store at -20°C as received.
Stability:	Stable for 12 months from date of receipt.
Predicted Protein Size:	29 kDa
Gene Name:	CDC like kinase 2
Database Link:	<a href="#">NP_001282</a> <a href="#">Entrez Gene 1196 Human P49760</a>
Background:	The function of this protein remains unknown.
Synonyms:	CDC-like kinase 2; CLK kinase; dual specificity protein kinase CLK2; hCLK2; MGC61500
Note:	Immunogen Sequence Homology: Dog: 100%; Pig: 100%; Rat: 100%; Horse: 100%; Human: 100%; Mouse: 100%; Bovine: 100%; Rabbit: 100%; Guinea pig: 100%; Zebrafish: 86%



[View online »](#)

Protein Families: Druggable Genome, Protein Kinase

### Product images:



Host: Rabbit; Target Name: CLK2; Sample Tissue: ACHN Whole cell lysates; Antibody Dilution: 1.0 ug/ml