

Product datasheet for **TA340039**

Cela1 Rabbit Polyclonal Antibody

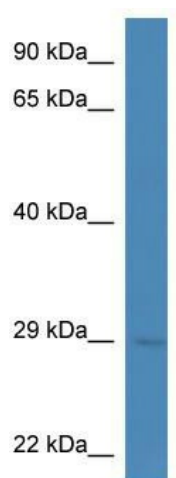
Product data:

Product Type:	Primary Antibodies
Applications:	WB
Recommended Dilution:	WB
Reactivity:	Mouse
Host:	Rabbit
Isotype:	IgG
Clonality:	Polyclonal
Immunogen:	The immunogen for anti-Ela1 antibody: synthetic peptide corresponding to a region of Mouse. Synthetic peptide located within the following region: RVVVGHEHNSQNDGTEQYVNVQKIVSHPYWNKNNVVAGYDIALLRLAKSV
Formulation:	Liquid. Purified antibody supplied in 1x PBS buffer with 0.09% (w/v) sodium azide and 2% sucrose. <i>Note that this product is shipped as lyophilized powder to China customers.</i>
Concentration:	lot specific
Purification:	Affinity Purified
Conjugation:	Unconjugated
Storage:	Store at -20°C as received.
Stability:	Stable for 12 months from date of receipt.
Predicted Protein Size:	29 kDa
Gene Name:	chymotrypsin-like elastase family, member 1
Database Link:	NP_291090 Entrez Gene 109901 Mouse Q91X79
Background:	The function remains unknown.
Synonyms:	ELA1; Elastase-1
Note:	Immunogen Sequence Homology: Rat: 100%; Human: 100%; Bovine: 100%; Dog: 92%; Mouse: 92%; Rabbit: 86%; Pig: 85%; Horse: 85%



[View online »](#)

Product images:



WB Suggested Anti-Ela1 Antibody; Titration: 1.0 ug/ml; Positive Control: Mouse Kidney