

## Product datasheet for **TA340038**

### CELA1 Rabbit Polyclonal Antibody

#### Product data:

Product Type:	Primary Antibodies
Applications:	WB
Recommended Dilution:	WB
Reactivity:	Human
Host:	Rabbit
Isotype:	IgG
Clonality:	Polyclonal
Immunogen:	The immunogen for anti-ELA1 antibody: synthetic peptide directed towards the N terminal of human ELA1. Synthetic peptide located within the following region: LVLYGHSTQDLPETNARVVGGTEAGRNSWPSQISLQYRSGGSRYHTCGGT
Formulation:	Liquid. Purified antibody supplied in 1x PBS buffer with 0.09% (w/v) sodium azide and 2% sucrose. <i>Note that this product is shipped as lyophilized powder to China customers.</i>
Concentration:	lot specific
Purification:	Affinity Purified
Conjugation:	Unconjugated
Storage:	Store at -20°C as received.
Stability:	Stable for 12 months from date of receipt.
Predicted Protein Size:	28 kDa
Gene Name:	chymotrypsin like elastase family member 1
Database Link:	<a href="#">NP_001962</a> <a href="#">Entrez Gene 1990 Human</a> <a href="#">Q9UNI1</a>



[View online »](#)

**Background:**

Elastases form a subfamily of serine proteases that hydrolyze many proteins in addition to elastin. Humans have six structurally similar proteins elastase 1, 2, 2A, 2B, 3A, and 3B. Unlike other elastases, pancreatic elastase 1 is not expressed in the pancreas. To date, elastase 1 (ELA1) expression has only been detected in skin keratinocytes. Clinical literature that describes human elastase 1 activity in the pancreas is actually referring to elastase 2A. Elastases form a subfamily of serine proteases that hydrolyze many proteins in addition to elastin. Humans have six elastase genes which encode the structurally similar proteins elastase 1, 2, 2A, 2B, 3A, and 3B. Unlike other elastases, pancreatic elastase 1 is not expressed in the pancreas. To date, elastase 1 expression has only been detected in skin keratinocytes. Clinical literature that describes human elastase 1 activity in the pancreas is actually referring to elastase 2A. Publication Note: This RefSeq record includes a subset of the publications that are available for this gene. Please see the Entrez Gene record to access additional publications. PRIMARYREFSEQ\_SPAN PRIMARY\_IDENTIFIER PRIMARY\_SPAN COMP 1-867 BC069454.1 1-867 868-952 AF120493.1 868-952

**Synonyms:**

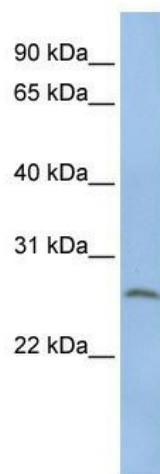
ELA1

**Note:**

Immunogen Sequence Homology: Human: 100%; Dog: 93%; Pig: 93%; Rat: 93%; Bovine: 93%; Rabbit: 93%; Guinea pig: 93%; Horse: 92%; Mouse: 77%

**Protein Families:**

Druggable Genome, Protease, Secreted Protein

**Product images:**

WB Suggested Anti-ELA1 Antibody Titration: 0.2-1 ug/ml; ELISA Titer: 1: 2500; Positive Control: HepG2 cell lysate