

Product datasheet for **TA340037**

Endothelin 2 (EDN2) Rabbit Polyclonal Antibody

Product data:

Product Type:	Primary Antibodies
Applications:	WB
Recommended Dilution:	WB
Reactivity:	Human
Host:	Rabbit
Isotype:	IgG
Clonality:	Polyclonal
Immunogen:	The immunogen for anti-EDN2 antibody: synthetic peptide directed towards the n terminal of human EDN2. Synthetic peptide located within the following region: MVSVPTTWCSVALALLVALHEGKQAAATLEQPASSSHAQGTHLRLRCS
Formulation:	Liquid. Purified antibody supplied in 1x PBS buffer with 0.09% (w/v) sodium azide and 2% sucrose. <i>Note that this product is shipped as lyophilized powder to China customers.</i>
Concentration:	lot specific
Purification:	Affinity Purified
Conjugation:	Unconjugated
Storage:	Store at -20°C as received.
Stability:	Stable for 12 months from date of receipt.
Predicted Protein Size:	20 kDa
Gene Name:	endothelin 2
Database Link:	NP_001947 Entrez Gene 1907 Human P20800
Background:	This gene encodes a member of the endothelin protein family of secretory vasoconstrictive peptides. The preproprotein is processed to a short mature form which functions as a ligand for the endothelin receptors that initiate intracellular signaling events. This gene product is involved in a wide range of biological processes, such as hypertension and ovulation.
Synonyms:	ET-2; ET2; PPET2

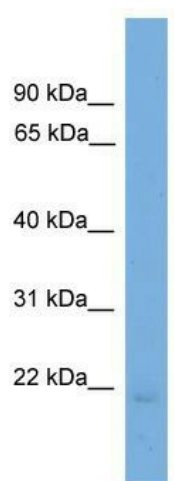


[View online »](#)

Note: Immunogen Sequence Homology: Human: 100%; Mouse: 100%; Rat: 93%; Rabbit: 93%

Protein Families: Druggable Genome, Secreted Protein

Product images:



WB Suggested Anti-EDN2 Antibody Titration: 0.2-1 ug/ml; ELISA Titer: 1: 312500; Positive Control: HepG2 cell lysate