

Product datasheet for **TA340036**

DBT Rabbit Polyclonal Antibody

Product data:

Product Type:	Primary Antibodies
Applications:	WB
Recommended Dilution:	WB
Reactivity:	Human
Host:	Rabbit
Isotype:	IgG
Clonality:	Polyclonal
Immunogen:	The immunogen for Anti-DBT antibody is: synthetic peptide directed towards the N-terminal region of Human DBT. Synthetic peptide located within the following region: EWYVKEGDTV SQFDSICEVQSDKASVTITSRYDGVIKKLYNLDIAYVG
Formulation:	Liquid. Purified antibody supplied in 1x PBS buffer with 0.09% (w/v) sodium azide and 2% sucrose. <i>Note that this product is shipped as lyophilized powder to China customers.</i>
Concentration:	lot specific
Purification:	Affinity Purified
Conjugation:	Unconjugated
Storage:	Store at -20°C as received.
Stability:	Stable for 12 months from date of receipt.
Predicted Protein Size:	35 kDa
Gene Name:	dihydrolipoamide branched chain transacylase E2
Database Link:	NP_001909 Entrez Gene 1629 Human P11182
Background:	The function of this protein remains unknown.
Synonyms:	BCATE2; BCKAD-E2; BCKADE2; BCOADC-E2; E2; E2B
Note:	Immunogen Sequence Homology: Dog: 100%; Pig: 100%; Rat: 100%; Horse: 100%; Human: 100%; Mouse: 100%; Bovine: 100%; Rabbit: 100%; Guinea pig: 100%; Zebrafish: 93%

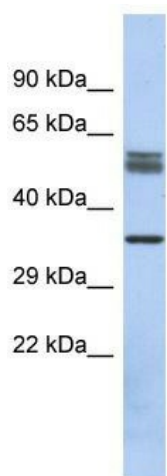


[View online »](#)

Protein Families: Druggable Genome

Protein Pathways: Metabolic pathways, Valine, leucine and isoleucine degradation

Product images:



Host: Rabbit; Target Name: DBT; Sample Tissue: Fetal Kidney lysates; Antibody Dilution: 1.0 ug/ml