

Product datasheet for **TA340035**

DBT Rabbit Polyclonal Antibody

Product data:

Product Type:	Primary Antibodies
Applications:	WB
Recommended Dilution:	WB
Reactivity:	Human
Host:	Rabbit
Isotype:	IgG
Clonality:	Polyclonal
Immunogen:	The immunogen for anti-DBT antibody: synthetic peptide directed towards the N terminal of human DBT. Synthetic peptide located within the following region: NYVCFGYPSFKYSHPHHFLKTTAALRGQVVQFKLSDIGEGIREVTVKEW
Formulation:	Liquid. Purified antibody supplied in 1x PBS buffer with 0.09% (w/v) sodium azide and 2% sucrose. <i>Note that this product is shipped as lyophilized powder to China customers.</i>
Concentration:	lot specific
Purification:	Affinity Purified
Conjugation:	Unconjugated
Storage:	Store at -20°C as received.
Stability:	Stable for 12 months from date of receipt.
Predicted Protein Size:	46 kDa
Gene Name:	dihydrolipoamide branched chain transacylase E2
Database Link:	NP_001909 Entrez Gene 1629 Human P11182



[View online »](#)

Background:

The branched-chain alpha-keto dehydrogenase complex catalyzes the overall conversion of alpha-keto acids to acyl-CoA and CO₂. It contains multiple copies of three enzymatic components: branched-chain alpha-keto acid decarboxylase (E1), lipoamide acyltransferase (E2) and lipoamide dehydrogenase (E3). The branched-chain alpha-keto acid dehydrogenase complex (BCKD) is an inner-mitochondrial enzyme complex involved in the breakdown of the branched-chain amino acids isoleucine, leucine, and valine. The BCKD complex is thought to be composed of a core of 24 transacylase (E2) subunits, and associated decarboxylase (E1), dehydrogenase (E3), and regulatory subunits. This gene encodes the transacylase (E2) subunit. Mutations in this gene result in maple syrup urine disease, type 2. Alternatively spliced transcript variants have been described, but their biological validity has not been determined. Publication Note: This RefSeq record includes a subset of the publications that are available for this gene. Please see the Entrez Gene record to access additional publications.

Synonyms:

BCATE2; BCKAD-E2; BCKADE2; BCOADC-E2; E2; E2B

Note:

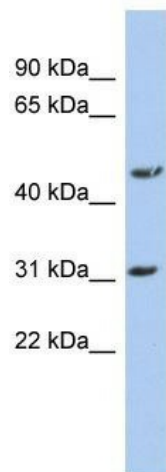
Immunogen Sequence Homology: Dog: 100%; Pig: 100%; Rat: 100%; Horse: 100%; Human: 100%; Mouse: 100%; Bovine: 100%; Rabbit: 100%; Guinea pig: 100%; Zebrafish: 93%; Yeast: 83%

Protein Families:

Druggable Genome

Protein Pathways:

Metabolic pathways, Valine, leucine and isoleucine degradation

Product images:

WB Suggested Anti-DBT Antibody Titration: 0.2-1 ug/ml; ELISA Titer: 1: 1562500; Positive Control: HT1080 cell lysate There is BioGPS gene expression data showing that DBT is expressed in HT1080