

Product datasheet for **TA340034**

CYC1 Rabbit Polyclonal Antibody

Product data:

Product Type:	Primary Antibodies
Applications:	WB
Recommended Dilution:	WB
Reactivity:	Human
Host:	Rabbit
Isotype:	IgG
Clonality:	Polyclonal
Immunogen:	The immunogen for anti-CYC1 antibody: synthetic peptide directed towards the middle region of human CYC1. Synthetic peptide located within the following region: RWASEPEHDHRKRMGLKMLMMALLVPLVYTIKRHKWSVLKSRKLAYRPP
Formulation:	Liquid. Purified antibody supplied in 1x PBS buffer with 0.09% (w/v) sodium azide and 2% sucrose. <i>Note that this product is shipped as lyophilized powder to China customers.</i>
Concentration:	lot specific
Purification:	Affinity Purified
Conjugation:	Unconjugated
Storage:	Store at -20°C as received.
Stability:	Stable for 12 months from date of receipt.
Predicted Protein Size:	35 kDa
Gene Name:	cytochrome c1
Database Link:	NP_001907 Entrez Gene 1537 Human P08574
Background:	CYC1 is the heme-containing component of the cytochrome b-c1 complex, which accepts electrons from Rieske protein and transfers electrons to cytochrome c in the mitochondrial respiratory chain.
Synonyms:	MC3DN6; UQCR4



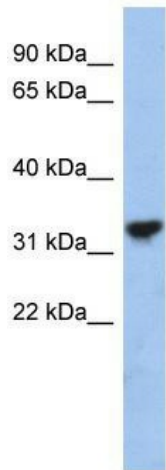
[View online »](#)

Note: Immunogen Sequence Homology: Dog: 100%; Pig: 100%; Rat: 100%; Horse: 100%; Human: 100%; Mouse: 100%; Bovine: 100%; Guinea pig: 100%; Zebrafish: 93%

Protein Families: Druggable Genome

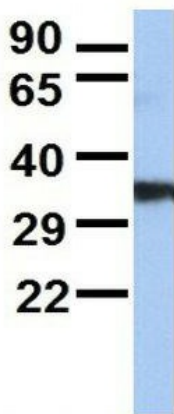
Protein Pathways: Alzheimer's disease, Cardiac muscle contraction, Huntington's disease, Metabolic pathways, Oxidative phosphorylation, Parkinson's disease

Product images:



WB Suggested Anti-CYC1 Antibody Titration: 0.2-1 ug/ml; ELISA Titer: 1: 1562500; Positive Control: Jurkat cell lysate

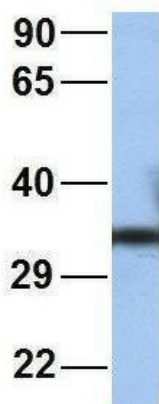
CYC1



Rabbit Anti-CYC1
 Sample Type: Human Adult Placenta
 Antibody Concentration: 1ug/mL

2Hum. Adult Placenta; Host: Rabbit; Target Name: SERPINA3; Sample Tissue: Human Adult Placenta; Antibody Dilution: 1.0 ug/ml

CYC1



Rabbit Anti-CYC1
Sample Type: Human Fetal Brain
Antibody Concentration: 1ug/mL

3Hum. Fetal Brain; Host: Rabbit; Target Name:
NOP56; Sample Tissue: Human Fetal Brain;
Antibody Dilution: 1.0 ug/ml