

Product datasheet for **TA340031**

Casein Kinase 1 delta (CSNK1D) Rabbit Polyclonal Antibody

Product data:

Product Type:	Primary Antibodies
Applications:	WB
Recommended Dilution:	WB
Reactivity:	Human
Host:	Rabbit
Isotype:	IgG
Clonality:	Polyclonal
Immunogen:	The immunogen for anti-CSNK1D antibody: synthetic peptide directed towards the middle region of human CSNK1D. Synthetic peptide located within the following region: NLVYIIDFGLAKKYRDARTHQHIPPYRENKNLTGTARYASINTHLGIEQSR
Formulation:	Liquid. Purified antibody supplied in 1x PBS buffer with 0.09% (w/v) sodium azide and 2% sucrose. <i>Note that this product is shipped as lyophilized powder to China customers.</i>
Concentration:	lot specific
Purification:	Affinity Purified
Conjugation:	Unconjugated
Storage:	Store at -20°C as received.
Stability:	Stable for 12 months from date of receipt.
Predicted Protein Size:	47 kDa
Gene Name:	casein kinase 1 delta
Database Link:	NP_001884 Entrez Gene 1453 Human P48730
Background:	This gene is a member of the casein kinase I (CKI) gene family whose members have been implicated in the control of cytoplasmic and nuclear processes, including DNA replication and repair. The encoded protein is highly similar to the mouse and rat CK1 del
Synonyms:	ASPS; CKIdelta; FASPS2; HCKID



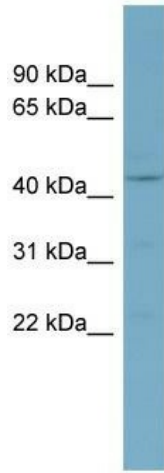
[View online »](#)

Note: Immunogen Sequence Homology: Dog: 100%; Pig: 100%; Rat: 100%; Horse: 100%; Human: 100%; Mouse: 100%; Sheep: 100%; Bovine: 100%; Rabbit: 100%; Zebrafish: 100%; Guinea pig: 100%

Protein Families: Druggable Genome, Protein Kinase

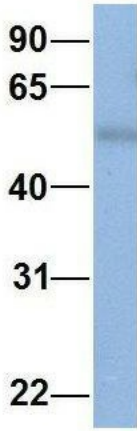
Protein Pathways: Circadian rhythm - mammal, Gap junction, Hedgehog signaling pathway

Product images:



WB Suggested Anti-CSNK1D Antibody Titration: 0.2-1 ug/ml; ELISA Titer: 1: 12500; Positive Control: OVCAR-3 cell lysate

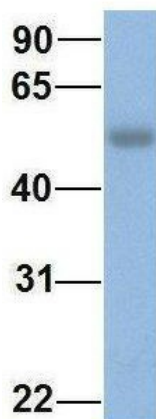
CSNK1D



Rabbit Anti-CSNK1D
 Sample Type: Human Adult Placenta
 Antibody Concentration: 1ug/mL

2Hum. Adult Placenta; Host: Rabbit; Target Name: CHAD; Sample Tissue: Human Adult Placenta; Antibody Dilution: 1.0 ug/ml

CSNK1D



Rabbit Anti-CSNK1D
Sample Type: Human Fetal Lung
Antibody Concentration: 1ug/mL

Host: Rabbit; Target Name: CSNK1D; Sample
Tissue: Human Fetal Lung; Antibody Dilution: 1.0
ug/ml