

## Product datasheet for **TA340030**

### mu Crystallin (CRYM) Rabbit Polyclonal Antibody

#### Product data:

Product Type:	Primary Antibodies
Applications:	WB
Recommended Dilution:	WB
Reactivity:	Human
Host:	Rabbit
Isotype:	IgG
Clonality:	Polyclonal
Immunogen:	The immunogen for anti-CRYM antibody: synthetic peptide directed towards the middle region of human CRYM. Synthetic peptide located within the following region: AHINAVGASRPDWRELDDELMKEAVLYVDSQEALKESGDVLLSGAEIFA
Formulation:	Liquid. Purified antibody supplied in 1x PBS buffer with 0.09% (w/v) sodium azide and 2% sucrose. <i>Note that this product is shipped as lyophilized powder to China customers.</i>
Concentration:	lot specific
Purification:	Affinity Purified
Conjugation:	Unconjugated
Storage:	Store at -20°C as received.
Stability:	Stable for 12 months from date of receipt.
Predicted Protein Size:	30 kDa
Gene Name:	crystallin mu
Database Link:	<a href="#">NP_001014444</a> <a href="#">Entrez Gene 1428 Human</a> <a href="#">Q14894</a>



[View online »](#)

**Background:**

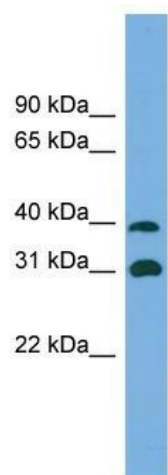
Crystallins are separated into two classes: taxon-specific and ubiquitous. The former class is also called phylogenetically-restricted crystallins. The latter class constitutes the major proteins of vertebrate eye lens and maintains the transparency and refractive index of the lens. This gene encodes a taxon-specific crystallin protein that binds NADPH and has sequence similarity to bacterial ornithine cyclodeaminases. The encoded protein does not perform a structural role in lens tissue, and instead it binds thyroid hormone for possible regulatory or developmental roles. Mutations in this gene have been associated with autosomal dominant non-syndromic deafness. Multiple alternatively spliced transcript variants have been found for this gene.

**Synonyms:**

DFNA40; THBP

**Note:**

Immunogen Sequence Homology: Dog: 100%; Goat: 100%; Horse: 100%; Human: 100%; Bovine: 100%; Rabbit: 100%; Pig: 93%; Rat: 93%; Mouse: 93%; Guinea pig: 93%

**Product images:**

WB Suggested Anti-CRYM Antibody Titration: 0.2-1 ug/ml; ELISA Titer: 1: 62500; Positive Control: Human Placenta