

Product datasheet for **TA340024**

Cdo1 Rabbit Polyclonal Antibody

Product data:

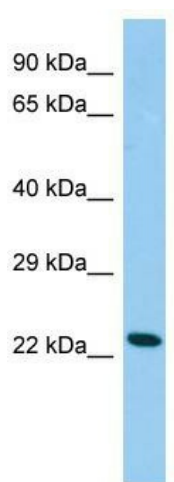
Product Type:	Primary Antibodies
Applications:	WB
Recommended Dilution:	WB
Reactivity:	Rat
Host:	Rabbit
Isotype:	IgG
Clonality:	Polyclonal
Immunogen:	The immunogen for Anti-Cdo1 antibody is: synthetic peptide directed towards the C-terminal region of Rat Cdo1. Synthetic peptide located within the following region: RTLRENQAYINDSIGLHRVENVSHTEPAVSLHLYSPPFDTCHAFDQRTG
Formulation:	Liquid. Purified antibody supplied in 1x PBS buffer with 0.09% (w/v) sodium azide and 2% sucrose. <i>Note that this product is shipped as lyophilized powder to China customers.</i>
Concentration:	lot specific
Purification:	Affinity Purified
Conjugation:	Unconjugated
Storage:	Store at -20°C as received.
Stability:	Stable for 12 months from date of receipt.
Predicted Protein Size:	22 kDa
Gene Name:	cysteine dioxygenase type 1
Database Link:	NP_434696 Entrez Gene 81718 Rat P21816
Background:	Cdo1 is an enzyme crucial for the metabolism of cysteine.
Synonyms:	CDO; CDO-I



[View online »](#)

Note: Immunogen Sequence Homology: Dog: 100%; Pig: 100%; Rat: 100%; Horse: 100%; Human: 100%; Mouse: 100%; Bovine: 100%; Rabbit: 100%; Guinea pig: 100%; Zebrafish: 93%; Yeast: 85%

Product images:



Host: Rabbit; Target Name: Cdo1; Sample Tissue: Rat Testis lysates; Antibody Dilution: 1.0 ug/ml