

## Product datasheet for **TA340023**

### GRK2 Rabbit Polyclonal Antibody

#### Product data:

Product Type:	Primary Antibodies
Applications:	WB
Recommended Dilution:	WB
Reactivity:	Human, Mouse
Host:	Rabbit
Isotype:	IgG
Clonality:	Polyclonal
Immunogen:	The immunogen for anti-ADRBK1 antibody: synthetic peptide directed towards the C terminal of human ADRBK1. Synthetic peptide located within the following region: ILQCSDPELVQWKELRDAYREAQQLVQRVPMKMKPRSPVVELSKVPL
Formulation:	Liquid. Purified antibody supplied in 1x PBS buffer with 0.09% (w/v) sodium azide and 2% sucrose. <i>Note that this product is shipped as lyophilized powder to China customers.</i>
Concentration:	lot specific
Purification:	Affinity Purified
Conjugation:	Unconjugated
Storage:	Store at -20°C as received.
Stability:	Stable for 12 months from date of receipt.
Predicted Protein Size:	79 kDa
Gene Name:	G protein-coupled receptor kinase 2
Database Link:	<a href="#">NP_001610</a> <a href="#">Entrez Gene 110355 Mouse</a> <a href="#">Entrez Gene 156 Human</a> <a href="#">P25098</a>
Background:	The product of this gene phosphorylates the beta-2-adrenergic receptor and appears to mediate agonist-specific desensitization observed at high agonist concentrations. This protein is an ubiquitous cytosolic enzyme that specifically phosphorylates the activated form of the beta-adrenergic and related G-protein-coupled receptors. Abnormal coupling of beta-adrenergic receptor to G protein is involved in the pathogenesis of the failing heart.



[View online »](#)

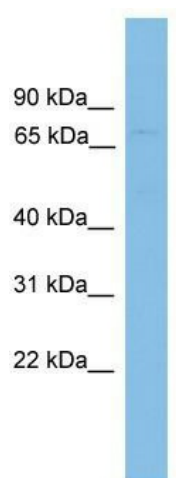
**Synonyms:** ADRBK1; BARK1; BETA-ARK1

**Note:** Immunogen Sequence Homology: Dog: 100%; Pig: 100%; Rat: 100%; Horse: 100%; Human: 100%; Mouse: 100%; Bovine: 100%; Guinea pig: 100%

**Protein Families:** Druggable Genome, Protein Kinase

**Protein Pathways:** Chemokine signaling pathway, Endocytosis

### Product images:



WB Suggested Anti-ADRBK1 Antibody Titration: 0.2-1 ug/ml; ELISA Titer: 1: 1562500; Positive Control: PANC1 cell lysate ADRBK1 is strongly supported by BioGPS gene expression data to be expressed in Human PANC1 cells