

Name:Rabbit Polyclonal Anti-EIF2B1 Antibody**Catalog:** TA340021**Product Data Sheet - ANTIBODY**

Components:	Rabbit Polyclonal Anti-EIF2B1 Antibody (TA340021)
Amount:	100ul
Immunogen:	The immunogen for anti-EIF2B1 antibody: synthetic peptide directed towards the C terminal of human EIF2B1. Synthetic peptide located within the following region: ADTLKVAQTGQDLKEEHPWVDYTAPSLITLLFTDLGVLTPSAVSDLIKL
Host:	Rabbit
Isotype:	IgG
Species Reactivity:	Human
Guaranteed Applications:	WB
Suggested Dilutions:	WB
Concentration:	1mg/mL
Buffer:	Liquid. Purified antibody supplied in 1x PBS buffer with 0.09% (w/v) sodium azide and 2% sucrose.
Purification:	Affinity Purified
Storage Condition:	Shipped at -20°C or with ice packs, Upon delivery store at -20°C. Dilute in PBS(pH7.3) if necessary. Stable for 12 months from date of receipt. Avoid repeated freeze-thaws.

Target

Target Name:	EIF2B1
Alternative Name:	EIF2B; EIF2BA
Database Link:	NP_001405 Entrez Gene 1967 human

[Entrez Gene 209354 mouse](#)

[Entrez Gene 64514 rat](#)

[Entrez Gene 477447 dog](#)

Function:

EIF2B1 belongs to the EIF-2B alpha/beta/delta subunits family. It catalyzes the exchange of eukaryotic initiation factor 2-bound GDP for GTP. Defects in EIF2B1 are a cause of leukoencephalopathy with vanishing white matter (VWM).

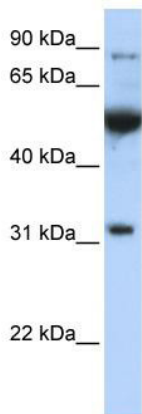
Other designations:

eukaryotic translation initiation factor 2B, subunit 1 alpha, 26kDa; eIF-2B GDP-GTP exchange factor subunit alpha

Other:

EIF2B; EIF2BA

Validation Data



WB Suggested Anti-EIF2B1 Antibody Titration: 0.2-1 ug/ml;
ELISA Titer: 1: 62500; Positive Control: Jurkat cell
lysate EIF2B1 is supported by BioGPS gene expression data
to be expressed in Jurkat

* More validation images may be available on our website:

<https://www.origene.com/catalog/antibodies/primary-antibodies/ta340021/eif2b1-rabbit-polyclonal-antibody>