

## Product datasheet for **TA340020**

### CRMP4 (DPYSL3) Rabbit Polyclonal Antibody

#### Product data:

Product Type:	Primary Antibodies
Applications:	IHC, WB
Recommended Dilution:	WB, IHC
Reactivity:	Human
Host:	Rabbit
Isotype:	IgG
Clonality:	Polyclonal
Immunogen:	The immunogen for anti-DPYSL3 antibody: synthetic peptide directed towards the middle region of human DPYSL3. Synthetic peptide located within the following region: VFDLTTTPKGGTPAGSARGSPTRPNPPVRNLHQSGFSLSGTQVDEGVRSA
Formulation:	Liquid. Purified antibody supplied in 1x PBS buffer with 0.09% (w/v) sodium azide and 2% sucrose. <i>Note that this product is shipped as lyophilized powder to China customers.</i>
Concentration:	lot specific
Purification:	Affinity Purified
Conjugation:	Unconjugated
Storage:	Store at -20°C as received.
Stability:	Stable for 12 months from date of receipt.
Predicted Protein Size:	62 kDa
Gene Name:	dihydropyrimidinase like 3
Database Link:	<a href="#">NP_001378</a> <a href="#">Entrez Gene 1809 Human Q14195</a>
Background:	DPYSL3 is necessary for signaling by class 3 semaphorins and subsequent remodeling of the cytoskeleton. DPYSL3 plays a role in axon guidance, neuronal growth cone collapse and cell migration.
Synonyms:	CRMP-4; CRMP4; DRP-3; DRP3; LCRMP; ULIP; ULIP-1



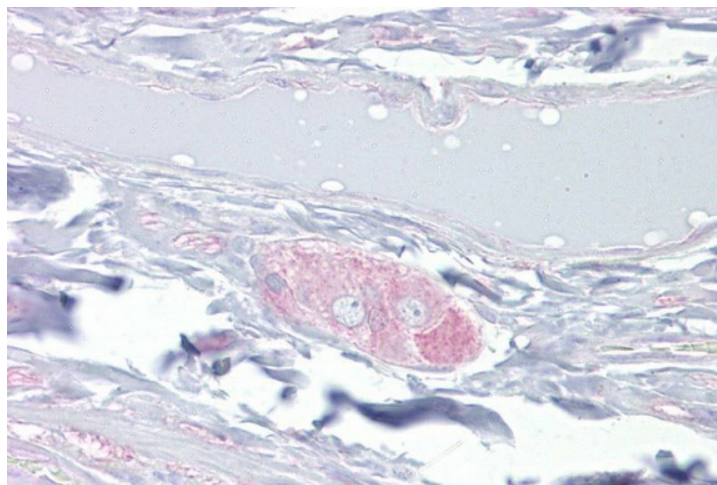
[View online »](#)

**Note:** Immunogen Sequence Homology: Dog: 100%; Pig: 100%; Rat: 100%; Human: 100%; Mouse: 100%; Bovine: 100%; Guinea pig: 100%; Horse: 93%; Rabbit: 93%

**Product images:**



WB Suggested Anti-DPYSL3 Antibody Titration:  
0.2-1 ug/ml; ELISA Titer: 1: 1562500; Positive  
Control: Transfected 293T



Immunohistochemistry with Small intestine,  
submucosal plexus tissue