

Product datasheet for **TA340019**

DPH2 Rabbit Polyclonal Antibody

Product data:

Product Type:	Primary Antibodies
Applications:	WB
Recommended Dilution:	WB
Reactivity:	Human
Host:	Rabbit
Isotype:	IgG
Clonality:	Polyclonal
Immunogen:	The immunogen for anti-DPH2 antibody: synthetic peptide directed towards the N terminal of human DPH2. Synthetic peptide located within the following region: CLSPPARPLPVAFVLRQRSVALELCVKAFEQNPDPKAPVLLSEPAHAH
Formulation:	Liquid. Purified antibody supplied in 1x PBS buffer with 0.09% (w/v) sodium azide and 2% sucrose. <i>Note that this product is shipped as lyophilized powder to China customers.</i>
Concentration:	lot specific
Purification:	Affinity Purified
Conjugation:	Unconjugated
Storage:	Store at -20°C as received.
Stability:	Stable for 12 months from date of receipt.
Predicted Protein Size:	52 kDa
Gene Name:	DPH2 homolog
Database Link:	NP_001375 Entrez Gene 1802 Human Q9BQC3



[View online »](#)

Background:

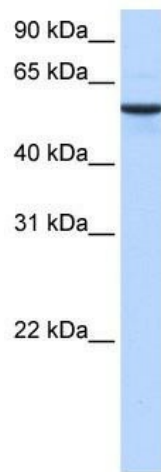
This gene is one of two human genes similar to the yeast gene dph2. The yeast gene was identified by its ability to complement a diphthamide mutant strain, and thus probably functions in diphthamide biosynthesis. Diphthamide is a post-translationally modified histidine residue present in elongation factor 2 (EF2) that is the target of diphtheria toxin ADP-ribosylation. This gene is one of two human genes similar to the yeast gene dph2. The yeast gene was identified by its ability to complement a diphthamide mutant strain, and thus probably functions in diphthamide biosynthesis. Diphthamide is a post-translationally modified histidine residue present in elongation factor 2 (EF2) that is the target of diphtheria toxin ADP-ribosylation. Two transcript variants encoding different isoforms have been found for this gene.

Synonyms:

DPH2L2

Note:

Immunogen Sequence Homology: Human: 100%; Dog: 93%; Horse: 93%; Mouse: 93%; Bovine: 93%; Rat: 92%; Pig: 86%; Rabbit: 86%; Guinea pig: 86%

Product images:

WB Suggested Anti-DPH2 Antibody Titration: 0.2-1 ug/ml; Positive Control: Human Muscle