

## Product datasheet for **TA340017**

### OVCA1 (DPH1) Rabbit Polyclonal Antibody

#### Product data:

Product Type:	Primary Antibodies
Applications:	IHC, WB
Recommended Dilution:	WB, IHC
Reactivity:	Human
Host:	Rabbit
Isotype:	IgG
Clonality:	Polyclonal
Immunogen:	The immunogen for anti-DPH1 antibody: synthetic peptide directed towards the middle region of human DPH1. Synthetic peptide located within the following region: RMQAARQEAIATARSAKSWGILGTLGRQGSPKILEHLESRLRALGLSFV
Formulation:	Liquid. Purified antibody supplied in 1x PBS buffer with 0.09% (w/v) sodium azide and 2% sucrose. <i>Note that this product is shipped as lyophilized powder to China customers.</i>
Concentration:	lot specific
Purification:	Affinity Purified
Conjugation:	Unconjugated
Storage:	Store at -20°C as received.
Stability:	Stable for 12 months from date of receipt.
Predicted Protein Size:	49 kDa
Gene Name:	diphthamide biosynthesis 1
Database Link:	<a href="#">NP_001374</a> <a href="#">Entrez Gene 1801 Human</a> <a href="#">Q9BZG8</a>



[View online »](#)

**Background:**

Diphthamide is a unique posttranslationally modified histidine found only in translation elongation factor-2 (EEF2; MIM 130610). This modification is conserved from archaebacteria to humans and serves as the target for ADP-ribosylation and inactivation of EEF2 by diphtheria toxin (DT) and Pseudomonas exotoxin A. DPH1 is 1 of several enzymes involved in synthesis of diphthamide in EEF2 (Liu et al., 2004 [PubMed 15485916]). Diphthamide is a unique posttranslationally modified histidine found only in translation elongation factor-2 (EEF2; MIM 130610). This modification is conserved from archaebacteria to humans and serves as the target for ADP-ribosylation and inactivation of EEF2 by diphtheria toxin (DT) and Pseudomonas exotoxin A. DPH1 is 1 of several enzymes involved in synthesis of diphthamide in EEF2 (Liu et al., 2004 [PubMed 15485916]). [supplied by OMIM]. PRIMARYREFSEQ\_SPAN PRIMARY\_IDENTIFIER PRIMARY\_SPAN COMP 1-40 AF321876.1 1-40 41-1028 BC003099.1 3-990 1029-1410 BP417755.1 78-459 1411-2188 AK090530.1 1484-2261 2189-2200 AF321876.1 2189-2200

**Synonyms:**

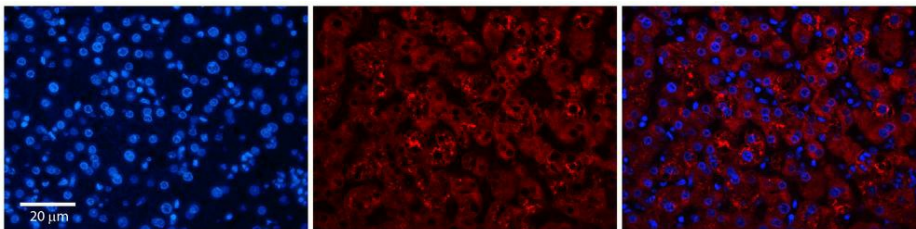
DPH2L; DPH2L1; OVCA1

**Note:**

Immunogen Sequence Homology: Dog: 100%; Pig: 100%; Rat: 100%; Horse: 100%; Human: 100%; Mouse: 100%; Bovine: 100%; Rabbit: 100%; Guinea pig: 100%; Zebrafish: 93%; Yeast: 83%

**Product images:**


WB Suggested Anti-DPH1 Antibody Titration: 0.2-1 ug/ml; Positive Control: MCF7 cell lysate DPH1 is supported by BioGPS gene expression data to be expressed in MCF7



Rabbit Anti-DPH1 Antibody; Formalin Fixed Paraffin Embedded Tissue: Human Adult Liver; Observed Staining: Cytoplasm (perinuclear) but not nuclear in hepatocytes, strong signal, low tissue distribution; Primary Antibody Concentration: 1: 100; Secondary Ant