

Product datasheet for **TA340013**

Cardiotrophin 1 (CTF1) Rabbit Polyclonal Antibody

Product data:

Product Type:	Primary Antibodies
Applications:	WB
Recommended Dilution:	WB
Reactivity:	Human
Host:	Rabbit
Isotype:	IgG
Clonality:	Polyclonal
Immunogen:	The immunogen for anti-CTF1 antibody: synthetic peptide directed towards the N terminal of human CTF1. Synthetic peptide located within the following region: HSLAHLTKYAEQLLQEYVQLQGDPFGLPSFSPRLPVAGLSAPAPSHAG
Formulation:	Liquid. Purified antibody supplied in 1x PBS buffer with 0.09% (w/v) sodium azide and 2% sucrose. <i>Note that this product is shipped as lyophilized powder to China customers.</i>
Concentration:	lot specific
Purification:	Affinity Purified
Conjugation:	Unconjugated
Storage:	Store at -20°C as received.
Stability:	Stable for 12 months from date of receipt.
Predicted Protein Size:	21 kDa
Gene Name:	cardiotrophin 1
Database Link:	NP_001321 Entrez Gene 1489 Human Q16619
Background:	CTF1 induces cardiac myocyte hypertrophy in vitro. It binds to and activates the ILST/gp130 receptor. It belongs to the IL-6 superfamily.
Synonyms:	CT-1; CT1



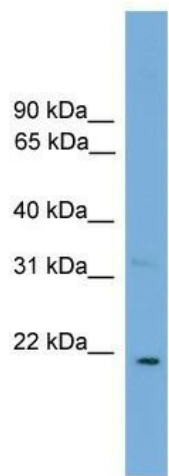
[View online »](#)

Note: Immunogen Sequence Homology: Human: 100%; Dog: 93%; Pig: 93%; Horse: 93%; Bovine: 93%; Rabbit: 93%; Rat: 86%; Mouse: 86%

Protein Families: ES Cell Differentiation/IPS, Secreted Protein

Protein Pathways: Cytokine-cytokine receptor interaction, Jak-STAT signaling pathway

Product images:



WB Suggested Anti-CTF1 Antibody Titration: 0.2-1 ug/ml; ELISA Titer: 1: 12500; Positive Control: 721_B cell lysate CTF1 is supported by BioGPS gene expression data to be expressed in 721_B