

Product datasheet for **TA340011**

CSNK1G2 Rabbit Polyclonal Antibody

Product data:

Product Type:	Primary Antibodies
Applications:	WB
Recommended Dilution:	WB
Reactivity:	Human
Host:	Rabbit
Isotype:	IgG
Clonality:	Polyclonal
Immunogen:	The immunogen for anti-CSNK1G2 antibody: synthetic peptide directed towards the middle region of human CSNK1G2. Synthetic peptide located within the following region: SKNQALNSTNGELNADDPTAGHSNAPITAPAEVEVADETKCCCFKRRKR
Formulation:	Liquid. Purified antibody supplied in 1x PBS buffer with 0.09% (w/v) sodium azide and 2% sucrose. <i>Note that this product is shipped as lyophilized powder to China customers.</i>
Concentration:	lot specific
Purification:	Affinity Purified
Conjugation:	Unconjugated
Storage:	Store at -20°C as received.
Stability:	Stable for 12 months from date of receipt.
Predicted Protein Size:	47 kDa
Gene Name:	casein kinase 1 gamma 2
Database Link:	NP_001310 Entrez Gene 1455 Human P78368
Background:	CSNK1G2 belongs to the protein kinase superfamily, CK1 Ser/Thr protein kinase family, casein kinase I subfamily. It contains 1 protein kinase domain. Casein kinases are operationally defined by their preferential utilization of acidic proteins such as caseins as substrates. It can phosphorylate a large number of proteins. It participates in Wnt signaling.
Synonyms:	CK1g2



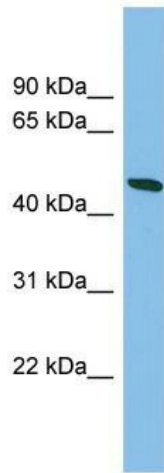
[View online »](#)

Note: Immunogen Sequence Homology: Human: 100%; Dog: 93%; Pig: 93%; Rat: 93%; Mouse: 93%; Bovine: 93%; Zebrafish: 93%; Horse: 86%; Guinea pig: 86%; Rabbit: 85%

Protein Families: Druggable Genome, Protein Kinase

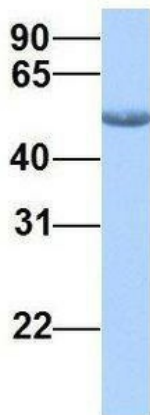
Protein Pathways: Hedgehog signaling pathway

Product images:



WB Suggested Anti-CSNK1G2 Antibody Titration: 0.2-1 ug/ml; ELISA Titer: 1: 312500; Positive Control: A549 cell lysate

CSNK1G2



Rabbit Anti-CSNK1G2
Sample Type: Human Fetal Brain
Antibody Concentration: 1ug/mL

Host: Rabbit; Target Name: CSNK1G2; Sample Tissue: Human Fetal Brain; Antibody Dilution: 1.0 ug/ml