

Product datasheet for **TA340007**

Clns1a Rabbit Polyclonal Antibody

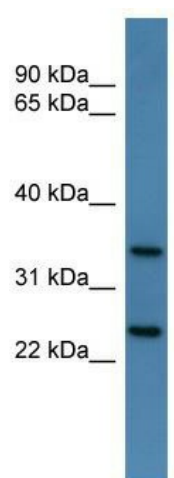
Product data:

Product Type:	Primary Antibodies
Applications:	WB
Recommended Dilution:	WB
Reactivity:	Mouse
Host:	Rabbit
Isotype:	IgG
Clonality:	Polyclonal
Immunogen:	The immunogen for anti-Clns1a antibody: synthetic peptide corresponding to a region of Mouse. Synthetic peptide located within the following region: ALHPDPEDESDDDYDGEEYDVEAHEQGQGDIPTFYTYEEGLSHLTAEGQA
Formulation:	Liquid. Purified antibody supplied in 1x PBS buffer with 0.09% (w/v) sodium azide and 2% sucrose. <i>Note that this product is shipped as lyophilized powder to China customers.</i>
Concentration:	lot specific
Purification:	Affinity Purified
Conjugation:	Unconjugated
Storage:	Store at -20°C as received.
Stability:	Stable for 12 months from date of receipt.
Predicted Protein Size:	27 kDa
Gene Name:	chloride channel, nucleotide-sensitive, 1A
Database Link:	NP_076160 Entrez Gene 12729 Mouse
Background:	The function of Clns1a remains unknown.
Synonyms:	CLCI; CLNS1B; I(Cln); IClN
Note:	Immunogen Sequence Homology: Dog: 100%; Pig: 100%; Rat: 100%; Horse: 100%; Human: 100%; Mouse: 100%; Bovine: 100%; Rabbit: 100%; Guinea pig: 100%; Zebrafish: 75%



[View online »](#)

Product images:



WB Suggested Anti-Clns1a Antibody Titration: 0.2-1 ug/ml; ELISA Titer: 1: 312500; Positive Control: Mouse Spleen