

Product datasheet for **TA340002**

CHI3L1 Rabbit Polyclonal Antibody

Product data:

Product Type:	Primary Antibodies
Applications:	IF, WB
Recommended Dilution:	WB, IF
Reactivity:	Human, SimianIVE
Host:	Rabbit
Isotype:	IgG
Clonality:	Polyclonal
Immunogen:	The immunogen for anti-CHI3L1 antibody: synthetic peptide directed towards the middle region of human CHI3L1. Synthetic peptide located within the following region: LDFISIMTYDFHGAWRGTTGHHSPFRGQEDASPDRFSNTDYAVGYMLRL
Formulation:	Liquid. Purified antibody supplied in 1x PBS buffer with 0.09% (w/v) sodium azide and 2% sucrose. <i>Note that this product is shipped as lyophilized powder to China customers.</i>
Concentration:	lot specific
Purification:	Affinity Purified
Conjugation:	Unconjugated
Storage:	Store at -20°C as received.
Stability:	Stable for 12 months from date of receipt.
Predicted Protein Size:	42 kDa
Gene Name:	chitinase 3 like 1
Database Link:	NP_001267 Entrez Gene 1116 Human P36222
Background:	CHI3L1 may play an important role in the capacity of cells to respond to and cope with changes in their environment. CHI3L1 may play a role in tissue remodeling and defense against pathogens. It belongs to the glycosyl hydrolase 18 family. CHI3L1 may play an important role in the capacity of cells to respond to and cope with changes in their environment.



[View online »](#)

Synonyms: ASRT7; CGP-39; GP-39; GP39; HC-gp39; HCGP-3P; hCGP-39; YKL-40; YKL40; YYL-40

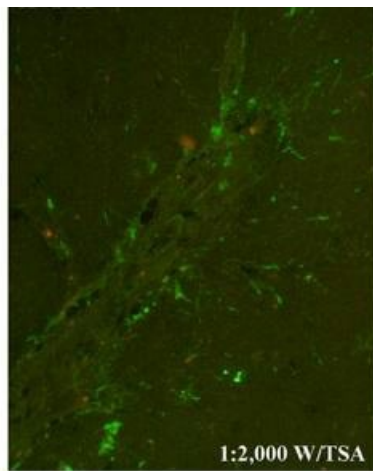
Note: Immunogen Sequence Homology: Human: 100%; Rabbit: 100%; Pig: 92%; Goat: 92%; Bovine: 92%; Dog: 77%; Rat: 77%

Protein Families: Secreted Protein

Product images:



WB Suggested Anti-CHI3L1 Antibody Titration: 0.2-1 ug/ml; Positive Control: HepG2 cell lysate



simian immunodeficiency virus encephalitis