

Product datasheet for **TA340000**

CHAD Rabbit Polyclonal Antibody

Product data:

Product Type:	Primary Antibodies
Applications:	WB
Recommended Dilution:	WB
Reactivity:	Human
Host:	Rabbit
Isotype:	IgG
Clonality:	Polyclonal
Immunogen:	The immunogen for anti-CHAD antibody: synthetic peptide directed towards the middle region of human CHAD. Synthetic peptide located within the following region: LSPLVNLFILQLNNNKIRELRAGAFQGAKDLRWLYLSENALSSLQPGALD
Formulation:	Liquid. Purified antibody supplied in 1x PBS buffer with 0.09% (w/v) sodium azide and 2% sucrose. <i>Note that this product is shipped as lyophilized powder to China customers.</i>
Concentration:	lot specific
Purification:	Affinity Purified
Conjugation:	Unconjugated
Storage:	Store at -20°C as received.
Stability:	Stable for 12 months from date of receipt.
Predicted Protein Size:	38 kDa
Gene Name:	chondroadherin
Database Link:	NP_001258 Entrez Gene 1101 Human O15335

[View online »](#)

Background: Chondroadherin is a cartilage matrix protein thought to mediate adhesion of isolated chondrocytes. CHAD contains 11 leucine-rich repeats flanked by cysteine-rich regions. The chondroadherin messenger RNA is present in chondrocytes at all ages. Chondroadherin is a cartilage matrix protein thought to mediate adhesion of isolated chondrocytes. The protein contains 11 leucine-rich repeats flanked by cysteine-rich regions. The chondroadherin messenger RNA is present in chondrocytes at all ages.

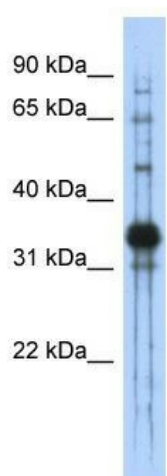
Synonyms: SLRR4A

Note: Immunogen Sequence Homology: Dog: 100%; Pig: 100%; Rat: 100%; Horse: 100%; Human: 100%; Mouse: 100%; Guinea pig: 100%; Bovine: 93%

Protein Families: Secreted Protein

Protein Pathways: ECM-receptor interaction, Focal adhesion

Product images:



WB Suggested Anti-CHAD Antibody Titration: 0.2-1 ug/ml; ELISA Titer: 1: 312500; Positive Control: Transfected 293T