

Product datasheet for TA339999

Ap1g1 Rabbit Polyclonal Antibody

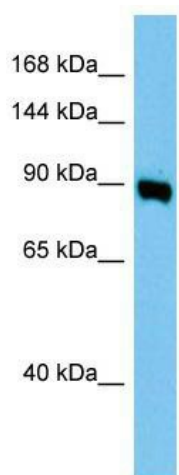
Product data:

| | |
|-------------------------|---|
| Product Type: | Primary Antibodies |
| Applications: | WB |
| Recommended Dilution: | WB |
| Reactivity: | Mouse |
| Host: | Rabbit |
| Isotype: | IgG |
| Clonality: | Polyclonal |
| Immunogen: | The immunogen for Anti-Ap1g1 antibody is: synthetic peptide directed towards the middle region of Mouse Ap1g1. Synthetic peptide located within the following region: TPVIPTAPTSKPASAGGELLDLLGDITLTGAPAAAPTPASVPQISQPPFL |
| Formulation: | Liquid. Purified antibody supplied in 1x PBS buffer with 0.09% (w/v) sodium azide and 2% sucrose. <i>Note that this product is shipped as lyophilized powder to China customers.</i> |
| Concentration: | lot specific |
| Purification: | Affinity Purified |
| Conjugation: | Unconjugated |
| Storage: | Store at -20°C as received. |
| Stability: | Stable for 12 months from date of receipt. |
| Predicted Protein Size: | 91 kDa |
| Gene Name: | adaptor protein complex AP-1, gamma 1 subunit |
| Database Link: | NP_033807 Entrez Gene 11765 Mouse P22892 |
| Background: | The function of this protein remains unknown. |
| Synonyms: | ADTG; CLAPG1; gamma1-adaptin; MGC18255 |
| Note: | Immunogen Sequence Homology: Human: 100%; Dog: 93%; Pig: 93%; Rat: 93%; Horse: 93%; Mouse: 93%; Bovine: 93%; Rabbit: 93% |



[View online »](#)

Product images:



WB Suggested Anti-Ap1g1 Antibody; Titration: 1.0 ug/ml; Positive Control: Mouse Lung