

Product datasheet for **TA339998**

gamma Adaptin (AP1G1) Rabbit Polyclonal Antibody

Product data:

Product Type:	Primary Antibodies
Applications:	WB
Recommended Dilution:	WB
Reactivity:	Human
Host:	Rabbit
Isotype:	IgG
Clonality:	Polyclonal
Immunogen:	The immunogen for anti-AP1G1 antibody: synthetic peptide directed towards the C terminal of human AP1G1. Synthetic peptide located within the following region: DHMRSALLERMPVMEKVTTNGPTEIVQTNGETEPAPLETKPPPSGPQPTS
Formulation:	Liquid. Purified antibody supplied in 1x PBS buffer with 0.09% (w/v) sodium azide and 2% sucrose. <i>Note that this product is shipped as lyophilized powder to China customers.</i>
Concentration:	lot specific
Purification:	Affinity Purified
Conjugation:	Unconjugated
Storage:	Store at -20°C as received.
Stability:	Stable for 12 months from date of receipt.
Predicted Protein Size:	91 kDa
Gene Name:	adaptor related protein complex 1 gamma 1 subunit
Database Link:	NP_001119 Entrez Gene 164 Human O43747



[View online »](#)

Background:

Adaptins are important components of clathrin-coated vesicles transporting ligand-receptor complexes from the plasma membrane or from the trans-Golgi network to lysosomes. The adaptin family of proteins is composed of four classes of molecules named alpha, beta-, beta prime- and gamma- adaptins. Adaptins, together with medium and small subunits, form a heterotetrameric complex called an adaptor, whose role is to promote the formation of clathrin-coated pits and vesicles. AP1G1 is a gamma-adaptin protein and it belongs to the adaptor complexes large subunits family. Adaptins are important components of clathrin-coated vesicles transporting ligand-receptor complexes from the plasma membrane or from the trans-Golgi network to lysosomes. The adaptin family of proteins is composed of four classes of molecules named alpha, beta-, beta prime- and gamma- adaptins. Adaptins, together with medium and small subunits, form a heterotetrameric complex called an adaptor, whose role is to promote the formation of clathrin-coated pits and vesicles. The protein encoded by this gene is a gamma-adaptin protein and it belongs to the adaptor complexes large subunits family. Two transcript variants encoding different isoforms have been found for this gene.

Synonyms:

ADTG; CLAPG1

Note:

Immunogen Sequence Homology: Dog: 100%; Pig: 100%; Rat: 100%; Horse: 100%; Human: 100%; Mouse: 100%; Rabbit: 100%; Bovine: 86%

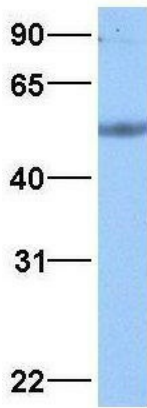
Protein Pathways:

Lysosome

Product images:

WB Suggested Anti-AP1G1 Antibody Titration: 0.2-1 ug/ml; Positive Control: Human brain

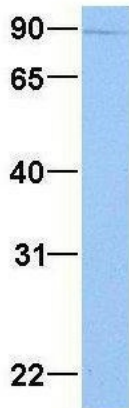
AP1G1



Rabbit Anti-AP1G1
 Sample Type: Human Adult Placenta
 Antibody Concentration: 1ug/mL

Host: Rabbit; Target Name: AP1G1; Sample Tissue: Human Adult Placenta; Antibody Dilution: 1.0 ug/ml

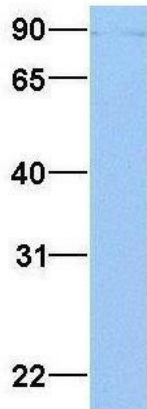
AP1G1



Rabbit Anti-AP1G1
 Sample Type: Human HepG2
 Antibody Concentration: 1ug/mL

Host: Rabbit; Target Name: AP1G1; Sample Tissue: HepG2; Antibody Dilution: 1.0 ug/ml AP1G1 is supported by BioGPS gene expression data to be expressed in HepG2

AP1G1



Rabbit Anti-AP1G1
 Sample Type: Human Jurkat
 Antibody Concentration: 1ug/mL

Host: Rabbit; Target Name: AP1G1; Sample Tissue: Jurkat; Antibody Dilution: 1.0 ug/ml AP1G1 is supported by BioGPS gene expression data to be expressed in Jurkat