

Product datasheet for **TA339995**

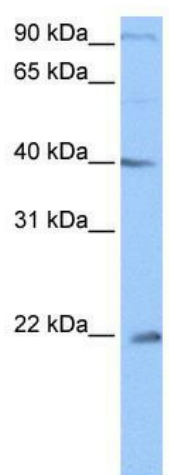
C4orf33 Rabbit Polyclonal Antibody

Product data:

Product Type:	Primary Antibodies
Applications:	WB
Recommended Dilution:	WB
Reactivity:	Human
Host:	Rabbit
Isotype:	IgG
Clonality:	Polyclonal
Immunogen:	The immunogen for anti-C4orf33 antibody: synthetic peptide directed towards the C terminal of human C4orf33. Synthetic peptide located within the following region: PNVTKFNSFAIHGSKDKRSYEALYPVPQHELQQGQKPDFHCLEYFKSFNF
Formulation:	Liquid. Purified antibody supplied in 1x PBS buffer with 0.09% (w/v) sodium azide and 2% sucrose. <i>Note that this product is shipped as lyophilized powder to China customers.</i>
Concentration:	lot specific
Purification:	Affinity Purified
Conjugation:	Unconjugated
Storage:	Store at -20°C as received.
Stability:	Stable for 12 months from date of receipt.
Predicted Protein Size:	23 kDa
Gene Name:	chromosome 4 open reading frame 33
Database Link:	NP_001093253 Entrez Gene 132321 Human Q8N1A6
Background:	C4orf33 belongs to the UPF0462 family. The exact function of C4orf33 remains unknown.
Synonyms:	FLJ33703
Note:	Immunogen Sequence Homology: Rat: 100%; Horse: 100%; Human: 100%; Mouse: 100%; Bovine: 100%; Dog: 93%; Pig: 93%; Rabbit: 93%; Guinea pig: 79%



[View online >](#)

Product images:

WB Suggested Anti-C4orf33 Antibody Titration:
0.2-1 ug/ml; Positive Control: Jurkat cell lysate