

Product datasheet for **TA339993**

SLC47A2 Rabbit Polyclonal Antibody

Product data:

| | |
|-------------------------|-----------------------------------------------------------------------------------------------------------------------------------------------------------------------------------------------------------------------------|
| Product Type: | Primary Antibodies |
| Applications: | WB |
| Recommended Dilution: | WB |
| Reactivity: | Human |
| Host: | Rabbit |
| Isotype: | IgG |
| Clonality: | Polyclonal |
| Immunogen: | The immunogen for anti-SLC47A2 antibody: synthetic peptide directed towards the C terminal of human SLC47A2. Synthetic peptide located within the following region: TYSRSECHVDFFRTPEEAHALSAPTSRSLSVKQLVIRRGAAALGAASATLMV |
| Formulation: | Liquid. Purified antibody supplied in 1x PBS buffer with 0.09% (w/v) sodium azide and 2% sucrose. |
| Concentration: | lot specific |
| Purification: | Affinity Purified |
| Conjugation: | Unconjugated |
| Storage: | Store at -20°C as received. |
| Stability: | Stable for 12 months from date of receipt. |
| Predicted Protein Size: | 61 kDa |
| Gene Name: | solute carrier family 47 member 2 |
| Database Link: | NP_001093116 Entrez Gene 146802 Human Q86VL8 |



[View online »](#)

Background:

SLC47A2 is a protein belonging to a family of transporters involved in excretion of toxic electrolytes, both endogenous and exogenous, through urine and bile. This transporter family shares homology with the bacterial MATE (multidrug and toxin extrusion) protein family responsible for drug resistance. This gene encodes a protein belonging to a family of transporters involved in excretion of toxic electrolytes, both endogenous and exogenous, through urine and bile. This transporter family shares homology with the bacterial MATE (multidrug and toxin extrusion) protein family responsible for drug resistance. This gene is one of two members of the MATE transporter family located near each other on chromosome 17. Alternatively spliced transcript variants encoding different isoforms have been identified for this gene.

Synonyms:

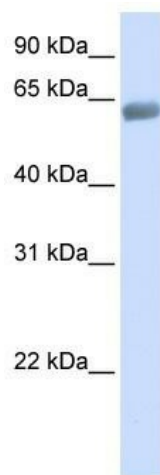
MATE2; MATE2-B; MATE2-K; MATE2K

Note:

Immunogen Sequence Homology: Human: 100%; Dog: 85%; Horse: 79%

Protein Families:

Transmembrane

Product images:

WB Suggested Anti-SLC47A2 Antibody Titration:
0.2-1 ug/ml; ELISA Titer: 1: 2500; Positive Control:
Human Lung