

Product datasheet for **TA339987**

TOM1L2 Rabbit Polyclonal Antibody

Product data:

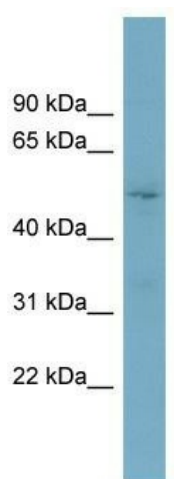
Product Type:	Primary Antibodies
Applications:	WB
Recommended Dilution:	WB
Reactivity:	Human
Host:	Rabbit
Isotype:	IgG
Clonality:	Polyclonal
Immunogen:	The immunogen for anti-TOM1L2 antibody: synthetic peptide directed towards the middle region of human TOM1L2. Synthetic peptide located within the following region: QPSVMDDIEVWLRTDLKGDDLEEGVTSEEFDKFLEERAKAAEMVPDLPSF
Formulation:	Liquid. Purified antibody supplied in 1x PBS buffer with 0.09% (w/v) sodium azide and 2% sucrose. <i>Note that this product is shipped as lyophilized powder to China customers.</i>
Concentration:	lot specific
Purification:	Affinity Purified
Conjugation:	Unconjugated
Storage:	Store at -20°C as received.
Stability:	Stable for 12 months from date of receipt.
Predicted Protein Size:	55 kDa
Gene Name:	target of myb1 like 2 membrane trafficking protein
Database Link:	NP_001076437 Entrez Gene 146691 Human Q6ZVM7
Background:	TOM1L2 has a probable role in protein transport. TOM1L2 may regulate growth factor-induced mitogenic signaling.
Synonyms:	FLJ21501; FLJ32746



[View online »](#)

Note: Immunogen Sequence Homology: Dog: 100%; Pig: 100%; Rat: 100%; Horse: 100%; Human: 100%; Mouse: 100%; Bovine: 100%; Rabbit: 100%; Zebrafish: 100%; Guinea pig: 100%

Product images:



WB Suggested Anti-TOM1L2 Antibody Titration:
0.2-1 ug/ml; Positive Control: OVCAR-3 cell lysate