

## Product datasheet for **TA339985**

### SERPINA6 Rabbit Polyclonal Antibody

#### Product data:

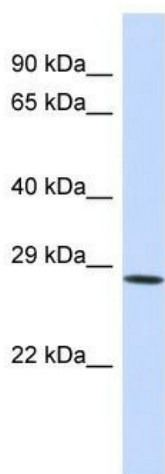
Product Type:	Primary Antibodies
Applications:	WB
Recommended Dilution:	WB
Reactivity:	Human
Host:	Rabbit
Isotype:	IgG
Clonality:	Polyclonal
Immunogen:	The immunogen for Anti-SERPINA6 antibody is: synthetic peptide directed towards the middle region of Human SERPINA6. Synthetic peptide located within the following region: QQLGFLNTERSETEIHQGFQHLHQLFAKSDTSLEMTMGNALFLDGSLELL
Formulation:	Liquid. Purified antibody supplied in 1x PBS buffer with 0.09% (w/v) sodium azide and 2% sucrose. <i>Note that this product is shipped as lyophilized powder to China customers.</i>
Concentration:	lot specific
Purification:	Affinity Purified
Conjugation:	Unconjugated
Storage:	Store at -20°C as received.
Stability:	Stable for 12 months from date of receipt.
Predicted Protein Size:	30 kDa
Gene Name:	serpin family A member 6
Database Link:	<a href="#">NP_001747</a> <a href="#">Entrez Gene 866 Human P08185</a>
Background:	The function of this protein remains unknown.
Synonyms:	CBG
Note:	Immunogen Sequence Homology: Rat: 100%; Human: 100%; Mouse: 93%; Pig: 92%; Horse: 86%; Bovine: 86%; Dog: 85%; Rabbit: 85%; Guinea pig: 85%; Sheep: 83%



[View online »](#)

Protein Families: Druggable Genome, Secreted Protein

### Product images:



Host: Rabbit

Target Name: SERPINA6

Sample Tissue: HeLa Cell Lysate

Antibody Dilution: 1.0 µg/ml

Host: Rabbit; Target Name: SERPINA6; Sample Tissue: HeLa Whole Cell lysates; Antibody Dilution: 1.0 ug/ml