

Product datasheet for **TA339984**

Carboxypeptidase N subunit 2 (CPN2) Rabbit Polyclonal Antibody

Product data:

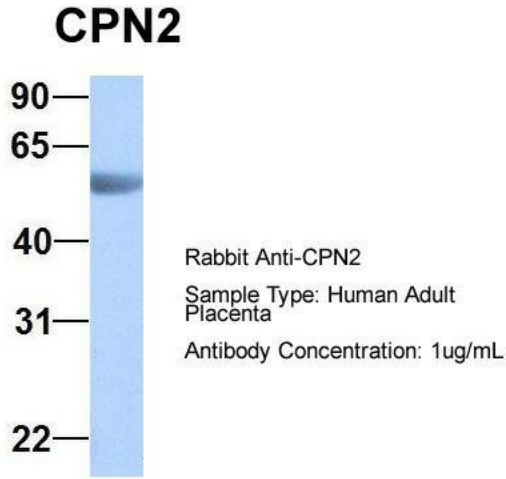
Product Type:	Primary Antibodies
Applications:	WB
Recommended Dilution:	WB
Reactivity:	Human
Host:	Rabbit
Isotype:	IgG
Clonality:	Polyclonal
Immunogen:	The immunogen for anti-CPN2 antibody: synthetic peptide directed towards the N terminal of human CPN2. Synthetic peptide located within the following region: FTTLETRAFGSPNLTQVWFLNTQLCQFRPDAFGGLPRLEDLEVTGSSFL
Formulation:	Liquid. Purified antibody supplied in 1x PBS buffer with 0.09% (w/v) sodium azide and 2% sucrose.
Concentration:	lot specific
Purification:	Affinity Purified
Conjugation:	Unconjugated
Storage:	Store at -20°C as received.
Stability:	Stable for 12 months from date of receipt.
Predicted Protein Size:	60 kDa
Gene Name:	carboxypeptidase N subunit 2
Database Link:	NP_001073982 Entrez Gene 1370 Human P22792
Background:	CPN2 contains 13 LRR (leucine-rich) repeats. The 83 kDa subunit binds and stabilizes the catalytic subunit at 37 degrees Celsius and keeps it in circulation. Under some circumstances it may be an allosteric modifier of the catalytic subunit.
Synonyms:	ACBP



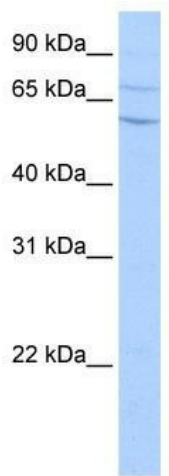
[View online »](#)

Note: Immunogen Sequence Homology: Rat: 100%; Human: 100%; Dog: 91%; Mouse: 91%; Bovine: 91%; Horse: 86%; Pig: 79%

Product images:



1Hum. Adult Placenta; Host: Rabbit; Target Name: CHAD; Sample Tissue: Human Adult Placenta; Antibody Dilution: 1.0 ug/ml



WB Suggested Anti-CPN2 Antibody Titration: 0.2-1 ug/ml; Positive Control: HepG2 cell lysate CPN2 is supported by BioGPS gene expression data to be expressed in HepG2