

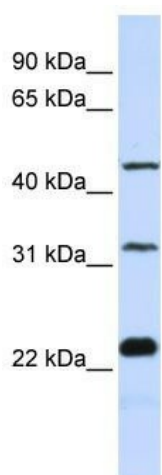
Product datasheet for **TA339982**

FAM153B Rabbit Polyclonal Antibody

Product data:

Product Type:	Primary Antibodies
Applications:	WB
Recommended Dilution:	WB
Reactivity:	Human
Host:	Rabbit
Isotype:	IgG
Clonality:	Polyclonal
Immunogen:	The immunogen for anti-FAM153B antibody: synthetic peptide directed towards the middle region of human LOC202134. Synthetic peptide located within the following region: VKKRVCFPSEDHLEEFIAEHLPEASNQSLTVAHADTGIQTNGDLEDLEE
Formulation:	Liquid. Purified antibody supplied in 1x PBS buffer with 0.09% (w/v) sodium azide and 2% sucrose.
Concentration:	lot specific
Purification:	Affinity Purified
Conjugation:	Unconjugated
Storage:	Store at -20°C as received.
Stability:	Stable for 12 months from date of receipt.
Predicted Protein Size:	43 kDa
Gene Name:	family with sequence similarity 153 member B
Database Link:	NP_001072997 Entrez Gene 202134 Human
Background:	The functions of LOC202134 remain unknown.
Synonyms:	DKFZp434D115
Note:	Immunogen Sequence Homology: Human: 100%

[View online »](#)

Product images:

WB Suggested Anti-FAM153B Antibody Titration:
0.2-1 ug/ml; ELISA Titer: 1: 12500; Positive
Control: Jurkat cell lysate