

Product datasheet for **TA339980**

Chimaerin 2 (CHN2) Rabbit Polyclonal Antibody

Product data:

Product Type:	Primary Antibodies
Applications:	WB
Recommended Dilution:	WB
Reactivity:	Human
Host:	Rabbit
Isotype:	IgG
Clonality:	Polyclonal
Immunogen:	The immunogen for anti-CHN2 antibody: synthetic peptide directed towards the N terminal of human CHN2. Synthetic peptide located within the following region: NHFNYEKTHNFKVHTFRGPHWCEYCANFMWGLIAQGVRCSDCGLNVHKQC
Formulation:	Liquid. Purified antibody supplied in 1x PBS buffer with 0.09% (w/v) sodium azide and 2% sucrose.
Concentration:	lot specific
Purification:	Affinity Purified
Conjugation:	Unconjugated
Storage:	Store at -20°C as received.
Stability:	Stable for 12 months from date of receipt.
Predicted Protein Size:	38 kDa
Gene Name:	chimerin 2
Database Link:	NP_001035025 Entrez Gene 1124 Human P52757



[View online »](#)

Background:

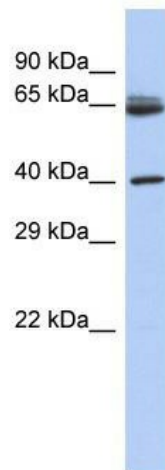
CHN2 is a protein with a phorbol-ester/DAG-type zinc finger, a Rho-GAP domain and an SH2 domain. This protein has GTPase-activating protein activity that is regulated by phospholipid binding and binding of diacylglycerol (DAG) induces translocation of the protein from the cytosol to the Golgi apparatus membrane. CHN2 plays a role in the proliferation and migration of smooth muscle cells. Decreased expression of this gene is associated with high-grade gliomas and breast tumors, and increased expression of this gene is associated with lymphomas. Mutations in this gene have been associated with schizophrenia in men. This gene is a member of the chimerin family and encodes a protein with a phorbol-ester/DAG-type zinc finger, a Rho-GAP domain and an SH2 domain. This protein has GTPase-activating protein activity that is regulated by phospholipid binding and binding of diacylglycerol (DAG) induces translocation of the protein from the cytosol to the Golgi apparatus membrane. The protein plays a role in the proliferation and migration of smooth muscle cells. Decreased expression of this gene is associated with high-grade gliomas and breast tumors, and increased expression of this gene is associated with lymphomas. Mutations in this gene have been associated with schizophrenia in men. Alternate transcriptional splice variants, encoding different isoforms, have been characterized.

Synonyms:

ARHGAP3; BCH; CHN2-3; RHOGAP3

Note:

Immunogen Sequence Homology: Dog: 100%; Pig: 100%; Rat: 100%; Horse: 100%; Human: 100%; Mouse: 100%; Bovine: 100%; Rabbit: 100%; Guinea pig: 100%; Zebrafish: 93%

Product images:

WB Suggested Anti-CHN2 Antibody Titration: 0.2-1 ug/ml; ELISA Titer: 1: 62500; Positive Control: Human Thymus