

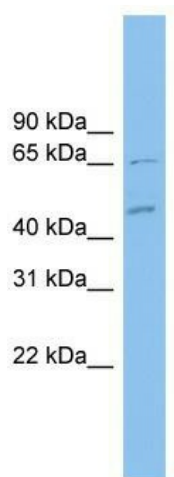
Product datasheet for TA339976

MDH1B Rabbit Polyclonal Antibody

Product data:

Product Type:	Primary Antibodies
Applications:	WB
Recommended Dilution:	WB
Reactivity:	Human
Host:	Rabbit
Isotype:	IgG
Clonality:	Polyclonal
Immunogen:	The immunogen for anti-MDH1B antibody: synthetic peptide directed towards the middle region of human MDH1B. Synthetic peptide located within the following region: YQSGHKDLVPDEEKNLAMSDAAEFPNQIPQTTFEKPQSLEFLNEFEGKTV
Formulation:	Liquid. Purified antibody supplied in 1x PBS buffer with 0.09% (w/v) sodium azide and 2% sucrose.
Concentration:	lot specific
Purification:	Affinity Purified
Conjugation:	Unconjugated
Storage:	Store at -20°C as received.
Stability:	Stable for 12 months from date of receipt.
Predicted Protein Size:	59 kDa
Gene Name:	malate dehydrogenase 1B
Database Link:	NP_001034934 Entrez Gene 130752 Human Q5I0G3
Background:	The function of this protein remains unknown.
Synonyms:	RP11-95H11
Note:	Immunogen Sequence Homology: Human: 100%


[View online »](#)

Product images:

WB Suggested Anti-MDH1B Antibody Titration:
0.2-1 ug/ml; ELISA Titer: 1: 62500; Positive
Control: NCI-H226 cell lysate