

## Product datasheet for **TA339975**

### RDM1 Rabbit Polyclonal Antibody

#### Product data:

Product Type:	Primary Antibodies
Applications:	WB
Recommended Dilution:	WB
Reactivity:	Human
Host:	Rabbit
Isotype:	IgG
Clonality:	Polyclonal
Immunogen:	The immunogen for anti-RDM1 antibody: synthetic peptide directed towards the middle region of human RDM1. Synthetic peptide located within the following region: NSSKQCQLANYFNGFNGCSKRIIKLQELSDLEERENEDSMVPLPKQSLKF
Formulation:	Liquid. Purified antibody supplied in 1x PBS buffer with 0.09% (w/v) sodium azide and 2% sucrose. <i>Note that this product is shipped as lyophilized powder to China customers.</i>
Concentration:	lot specific
Purification:	Affinity Purified
Conjugation:	Unconjugated
Storage:	Store at -20°C as received.
Stability:	Stable for 12 months from date of receipt.
Predicted Protein Size:	26 kDa
Gene Name:	RAD52 motif containing 1
Database Link:	<a href="#">NP_001030008</a> <a href="#">Entrez Gene 201299 Human</a> <a href="#">Q8NG50</a>



[View online »](#)

**Background:**

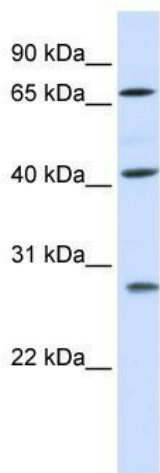
RDM1 is a protein involved in the cellular response to cisplatin, a drug commonly used in chemotherapy. It contains two motifs: a motif found in RAD52, a protein that functions in DNA double-strand breaks and homologous recombination, and an RNA recognition motif (RRM) that is not found in RAD52. The RAD52 motif region in RAD52 is important for protein function and may be involved in DNA binding or oligomerization. This gene encodes a protein involved in the cellular response to cisplatin, a drug commonly used in chemotherapy. The protein encoded by this gene contains two motifs: a motif found in RAD52, a protein that functions in DNA double-strand breaks and homologous recombination, and an RNA recognition motif (RRM) that is not found in RAD52. The RAD52 motif region in RAD52 is important for protein function and may be involved in DNA binding or oligomerization. Alternatively spliced transcript variants encoding different isoforms have been reported.

**Synonyms:**

RAD52B

**Note:**

Immunogen Sequence Homology: Rat: 100%; Human: 100%; Dog: 93%; Pig: 93%; Rabbit: 93%; Guinea pig: 91%; Mouse: 83%; Bovine: 83%

**Product images:**

WB Suggested Anti-RDM1 Antibody Titration: 0.2-1 ug/ml; ELISA Titer: 1: 62500; Positive Control: Human Placenta