

Product datasheet for **TA339974**

RIBC1 Rabbit Polyclonal Antibody

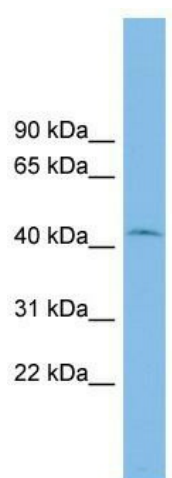
Product data:

Product Type:	Primary Antibodies
Applications:	WB
Recommended Dilution:	WB
Reactivity:	Human
Host:	Rabbit
Isotype:	IgG
Clonality:	Polyclonal
Immunogen:	The immunogen for anti-RIBC1 antibody: synthetic peptide directed towards the middle region of human RIBC1. Synthetic peptide located within the following region: ANANKAQAAVQAGRQRCERQREQKANLAEIQHQRSTDLLTENPQVAQHPM
Formulation:	Liquid. Purified antibody supplied in 1x PBS buffer with 0.09% (w/v) sodium azide and 2% sucrose.
Concentration:	lot specific
Purification:	Affinity Purified
Conjugation:	Unconjugated
Storage:	Store at -20°C as received.
Stability:	Stable for 12 months from date of receipt.
Predicted Protein Size:	44 kDa
Gene Name:	RIB43A domain with coiled-coils 1
Database Link:	NP_001026915 Entrez Gene 158787 Human Q8N443
Background:	The function of this protein remains unknown.
Synonyms:	2610028I09Rik
Note:	Immunogen Sequence Homology: Human: 100%; Rat: 92%; Mouse: 92%; Dog: 86%; Pig: 86%; Bovine: 86%; Horse: 79%; Rabbit: 79%



[View online »](#)

Product images:



WB Suggested Anti-RIBC1 Antibody Titration: 0.2-1 ug/ml; ELISA Titer: 1: 62500; Positive Control: COLO205 cell lysate