

## Product datasheet for **TA339973**

### LRRC17 Rabbit Polyclonal Antibody

#### Product data:

Product Type:	Primary Antibodies
Applications:	WB
Recommended Dilution:	WB
Reactivity:	Human
Host:	Rabbit
Isotype:	IgG
Clonality:	Polyclonal
Immunogen:	The immunogen for anti-LRRC17 antibody: synthetic peptide directed towards the middle region of human LRRC17. Synthetic peptide located within the following region: YVFPIQLDCKRKELKKVPNNIPPDIVKLDLSYNKINQLRPKEFEDVHEL
Formulation:	Liquid. Purified antibody supplied in 1x PBS buffer with 0.09% (w/v) sodium azide and 2% sucrose. <i>Note that this product is shipped as lyophilized powder to China customers.</i>
Concentration:	lot specific
Purification:	Affinity Purified
Conjugation:	Unconjugated
Storage:	Store at -20°C as received.
Stability:	Stable for 12 months from date of receipt.
Predicted Protein Size:	52 kDa
Gene Name:	leucine rich repeat containing 17
Database Link:	<a href="#">NP_001026862</a> <a href="#">Entrez Gene 10234 Human</a> <a href="#">Q8N6Y2</a>
Background:	LRRC17 contains 6 LRR (leucine-rich) repeats. The exact function of LRRC17 remains unknown.
Synonyms:	P37NB

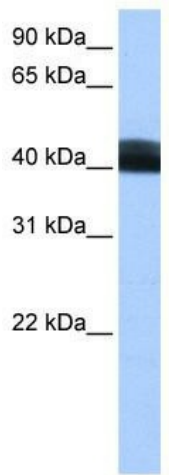


[View online »](#)

**Note:** Immunogen Sequence Homology: Dog: 100%; Rat: 100%; Human: 100%; Bovine: 93%; Rabbit: 93%; Pig: 86%; Horse: 86%; Mouse: 86%; Guinea pig: 86%; Zebrafish: 79%

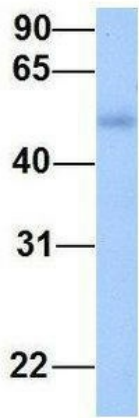
**Protein Families:** Druggable Genome

**Product images:**



WB Suggested Anti-LRRC17 Antibody Titration: 0.2-1 ug/ml; Positive Control: MCF7 cell lysate

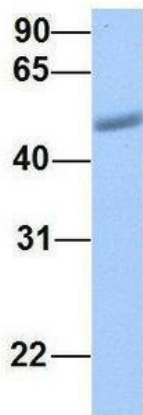
**LRRC17**



Rabbit Anti-LRRC17  
 Sample Type: Human Fetal Muscle  
 Antibody Concentration: 1ug/mL

Host: Rabbit; Target Name: LRRC17; Sample Tissue: Human Fetal Muscle; Antibody Dilution: 1.0 ug/ml

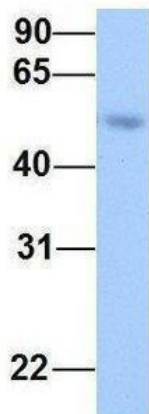
## LRRC17



Rabbit Anti-LRRC17  
Sample Type: Human Fetal Heart  
Antibody Concentration: 1ug/mL

Host: Rabbit; Target Name: LRRC17; Sample Tissue: Human Fetal Heart; Antibody Dilution: 1.0 ug/ml

## LRRC17



Rabbit Anti-LRRC17  
Sample Type: Human Fetal Lung  
Antibody Concentration: 1ug/mL

Host: Rabbit; Target Name: LRRC17; Sample Tissue: Human Fetal Lung; Antibody Dilution: 1.0 ug/ml