

Product datasheet for **TA339972**

LRRC17 Rabbit Polyclonal Antibody

Product data:

| | |
|-------------------------|---|
| Product Type: | Primary Antibodies |
| Applications: | WB |
| Recommended Dilution: | WB |
| Reactivity: | Human |
| Host: | Rabbit |
| Isotype: | IgG |
| Clonality: | Polyclonal |
| Immunogen: | The immunogen for Anti-LRRC17 antibody is: synthetic peptide directed towards the middle region of Human LRRC17. Synthetic peptide located within the following region: KVLTEEVFIYTPLLSYLRLYDNPWHCTCEIETLISMLQIPRNRNLGNYAK |
| Formulation: | Liquid. Purified antibody supplied in 1x PBS buffer with 0.09% (w/v) sodium azide and 2% sucrose. <i>Note that this product is shipped as lyophilized powder to China customers.</i> |
| Concentration: | lot specific |
| Purification: | Affinity Purified |
| Conjugation: | Unconjugated |
| Storage: | Store at -20°C as received. |
| Stability: | Stable for 12 months from date of receipt. |
| Predicted Protein Size: | 36 kDa |
| Gene Name: | leucine rich repeat containing 17 |
| Database Link: | NP_005815 Entrez Gene 10234 Human Q8N6Y2 |
| Background: | LRRC17 contains 6 LRR (leucine-rich) repeats. The exact function of LRRC17 remains unknown. |
| Synonyms: | P37NB |

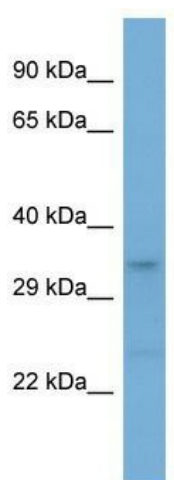


[View online »](#)

Note: Immunogen Sequence Homology: Pig: 100%; Rat: 100%; Horse: 100%; Human: 100%; Mouse: 100%; Bovine: 100%; Rabbit: 100%; Guinea pig: 100%; Dog: 92%

Protein Families: Druggable Genome

Product images:



Host: Rabbit; Target Name: LRRC17; Sample Tissue: HeLa Whole cell lysates; Antibody Dilution: 1.0 ug/ml