

Product datasheet for **TA339971**

CFAP221 Rabbit Polyclonal Antibody

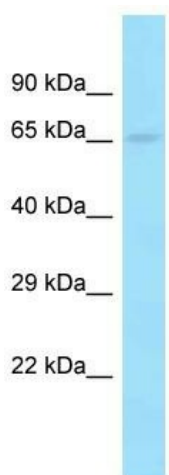
Product data:

Product Type:	Primary Antibodies
Applications:	WB
Recommended Dilution:	WB
Reactivity:	Human
Host:	Rabbit
Isotype:	IgG
Clonality:	Polyclonal
Immunogen:	The immunogen for Anti-PCDP1 antibody is: synthetic peptide directed towards the C-terminal region of Human PCDP1. Synthetic peptide located within the following region: SHPKYKFTKESR HGSSIPVTQKQFLHHTDIIPGIMHWKSFQSLVLSLPD
Formulation:	Liquid. Purified antibody supplied in 1x PBS buffer with 0.09% (w/v) sodium azide and 2% sucrose.
Concentration:	lot specific
Purification:	Affinity Purified
Conjugation:	Unconjugated
Storage:	Store at -20°C as received.
Stability:	Stable for 12 months from date of receipt.
Predicted Protein Size:	60 kDa
Gene Name:	cilia and flagella associated protein 221
Database Link:	NP_001025167 Entrez Gene 200373 Human Q4G0U5
Background:	PCDP1 is required for ciliary motility.
Synonyms:	MGC33657
Note:	Immunogen Sequence Homology: Human: 100%; Bovine: 100%; Rabbit: 86%; Dog: 79%; Pig: 79%



[View online »](#)

Product images:



Host: Rabbit

Target Name: PCDP1

Sample Tissue: Hela Cell Lysate

Antibody Dilution: 1.0 μ g/ml

Host: Rabbit; Target Name: PCDP1; Sample Tissue: Hela Whole Cell lysates; Antibody Dilution: 1.0 ug/ml