

## Product datasheet for **TA339969**

### Csnk1a1 Rabbit Polyclonal Antibody

#### Product data:

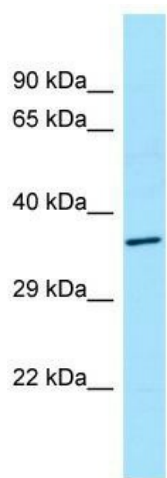
Product Type:	Primary Antibodies
Applications:	WB
Recommended Dilution:	WB
Reactivity:	Rat
Host:	Rabbit
Isotype:	IgG
Clonality:	Polyclonal
Immunogen:	The immunogen for Anti-Csnk1a1 antibody is: synthetic peptide directed towards the N-terminal region of Rat Csnk1a1. Synthetic peptide located within the following region: FGDIYLAINITNGEEVAVKLESQKARHPQLLYESKLYKILQGGVGIPHIR
Formulation:	Liquid. Purified antibody supplied in 1x PBS buffer with 0.09% (w/v) sodium azide and 2% sucrose. <i>Note that this product is shipped as lyophilized powder to China customers.</i>
Concentration:	lot specific
Purification:	Affinity Purified
Conjugation:	Unconjugated
Storage:	Store at -20°C as received.
Stability:	Stable for 12 months from date of receipt.
Predicted Protein Size:	35 kDa
Gene Name:	casein kinase 1, alpha 1
Database Link:	<a href="#">NP_446067</a> <a href="#">Entrez Gene 113927 Rat P97633</a>
Background:	Splice variant isoforms CKI alpha and CKI alpha L both have casein kinase I activity but display differences in substrate kinetics.
Synonyms:	CK1; CKI-alpha; HLCDGP1; PRO2975



[View online »](#)

**Note:** Immunogen Sequence Homology: Dog: 100%; Pig: 100%; Rat: 100%; Horse: 100%; Human: 100%; Mouse: 100%; Sheep: 100%; Bovine: 100%; Rabbit: 100%; Zebrafish: 100%; Guinea pig: 100%

**Product images:**



WB Suggested Anti-Csnk1a1 Antibody; Titration: 1.0 ug/ml; Positive Control: Rat Thymus