

Product datasheet for **TA339965**

GCOM1 Rabbit Polyclonal Antibody

Product data:

Product Type:	Primary Antibodies
Applications:	WB
Recommended Dilution:	WB
Reactivity:	Human
Host:	Rabbit
Isotype:	IgG
Clonality:	Polyclonal
Immunogen:	The immunogen for anti-Gcom1 antibody: synthetic peptide directed towards the middle region of human Gcom1. Synthetic peptide located within the following region: VAQVENQLLKMKVESSQEANAEMREMTKKLYSQYEEKLQEEQRKHSAEK
Formulation:	Liquid. Purified antibody supplied in 1x PBS buffer with 0.09% (w/v) sodium azide and 2% sucrose. <i>Note that this product is shipped as lyophilized powder to China customers.</i>
Concentration:	lot specific
Purification:	Affinity Purified
Conjugation:	Unconjugated
Storage:	Store at -20°C as received.
Stability:	Stable for 12 months from date of receipt.
Predicted Protein Size:	52 kDa
Gene Name:	GRINL1A complex locus 1
Database Link:	NP_001018101 Entrez Gene 145781 Human POCAP1



[View online »](#)

Background:

This gene (Gcom1) is part of a complex transcript unit that includes the gene for glutamate receptor, ionotropic, N-methyl D-aspartate-like 1A (GRINL1A). Transcription of this gene occurs at an upstream promoter, with two different groups of alternatively spliced variants: Gup for GRINL1A upstream transcripts and Gcom for GRINL1A combined transcripts. The GRINL1A gene uses a downstream promoter for transcription and also has multiple alternatively spliced variants. This gene (Gcom1) is part of a complex transcript unit that includes the gene for glutamate receptor, ionotropic, N-methyl D-aspartate-like 1A (GRINL1A). Transcription of this gene occurs at an upstream promoter, with two different groups of alternatively spliced variants: Gup for GRINL1A upstream transcripts and Gcom for GRINL1A combined transcripts. The GRINL1A gene uses a downstream promoter for transcription and also has multiple alternatively spliced variants.

Synonyms:

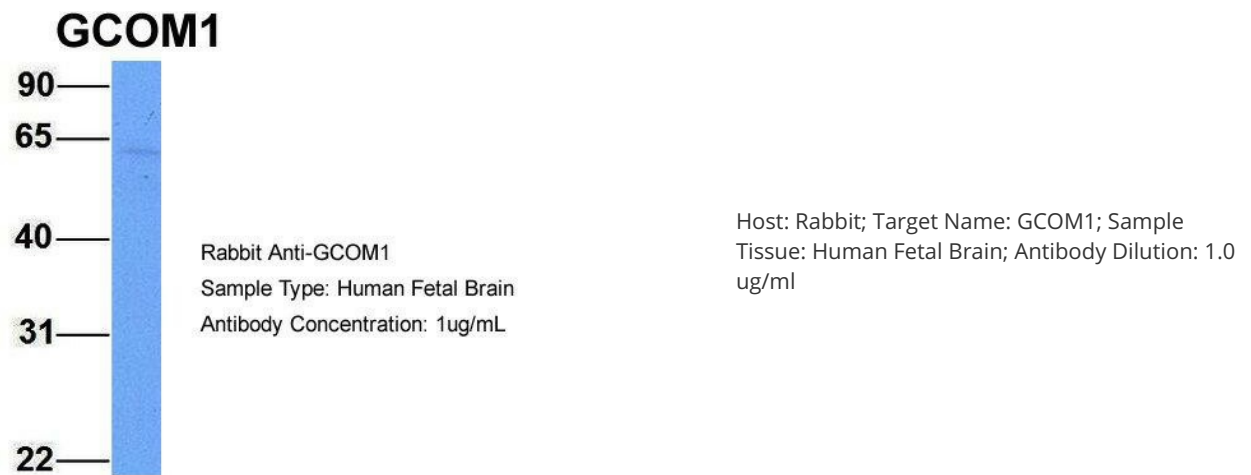
gcom; Gcom2; GRINL1A; MYZAP; MYZAP-POLR2M

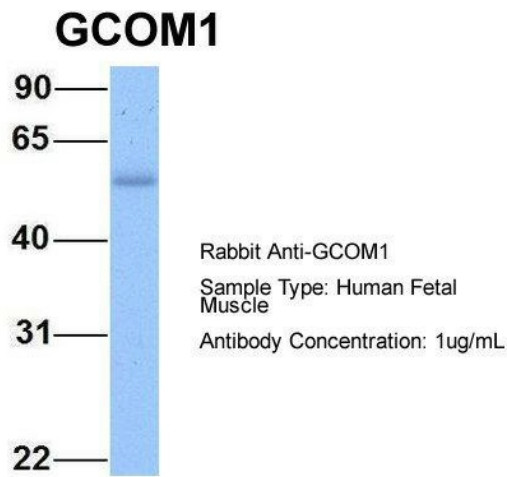
Note:

Immunogen Sequence Homology: Human: 100%; Yeast: 100%; Pig: 93%; Rat: 93%; Mouse: 93%; Guinea pig: 93%; Rabbit: 86%; Horse: 85%; Bovine: 85%; Dog: 77%; Zebrafish: 75%

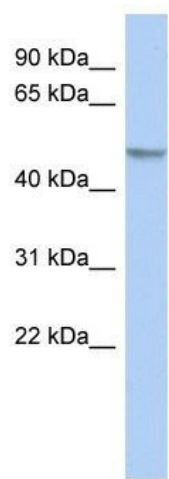
Protein Families:

Druggable Genome

Product images:



Host: Rabbit; Target Name: GCOM1; Sample Tissue: Human Fetal Muscle; Antibody Dilution: 1.0 ug/ml



WB Suggested Anti-Gcom1 Antibody Titration: 0.2-1 ug/ml; ELISA Titer: 1: 62500; Positive Control: COLO205 cell lysate Gcom1 is strongly supported by BioGPS gene expression data to be expressed in Human COLO205 cells