

Product datasheet for **TA339964**

Sorbs1 Rabbit Polyclonal Antibody

Product data:

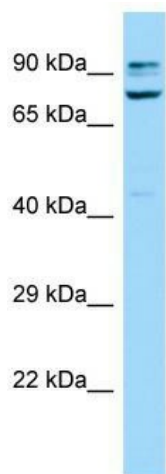
Product Type:	Primary Antibodies
Applications:	WB
Recommended Dilution:	WB
Reactivity:	Mouse
Host:	Rabbit
Isotype:	IgG
Clonality:	Polyclonal
Immunogen:	The immunogen for Anti-Sorbs1 antibody is: synthetic peptide directed towards the C-terminal region of Mouse Sorbs1. Synthetic peptide located within the following region: PQAQRRVTPDRSQPSLDLCSYQALYSYVPQNDDELELRDGDIVDVMEKC
Formulation:	Liquid. Purified antibody supplied in 1x PBS buffer with 0.09% (w/v) sodium azide and 2% sucrose. <i>Note that this product is shipped as lyophilized powder to China customers.</i>
Concentration:	lot specific
Purification:	Affinity Purified
Conjugation:	Unconjugated
Storage:	Store at -20°C as received.
Stability:	Stable for 12 months from date of receipt.
Predicted Protein Size:	103 kDa
Gene Name:	sorbin and SH3 domain containing 1
Database Link:	NP_848139 Entrez Gene 20411 Mouse Q62417
Background:	The function of this protein remains unknown.
Synonyms:	CAP; DKFZp451C066; DKFZp586P1422; FLAF2; FLJ12406; KIAA0894; KIAA1296; OTTHUMP00000020142; OTTHUMP00000020143; OTTHUMP00000020144; OTTHUMP00000020145; ponsin; R85FL; SH3D5; SH3P12; SORB1



[View online »](#)

Note: Immunogen Sequence Homology: Pig: 100%; Rat: 100%; Human: 100%; Mouse: 100%; Bovine: 100%; Dog: 93%; Horse: 93%; Rabbit: 93%; Guinea pig: 93%; Zebrafish: 92%

Product images:



WB Suggested Anti-Sorbs1 Antibody; Titration: 1.0 ug/ml; Positive Control: Mouse Testis