

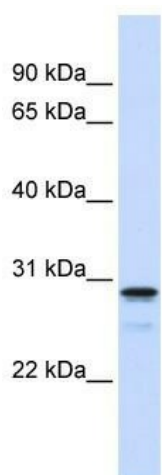
Product datasheet for **TA339963**

FAM78B Rabbit Polyclonal Antibody

Product data:

Product Type:	Primary Antibodies
Applications:	WB
Recommended Dilution:	WB
Reactivity:	Human
Host:	Rabbit
Isotype:	IgG
Clonality:	Polyclonal
Immunogen:	The immunogen for anti-FAM78B antibody: synthetic peptide directed towards the middle region of human FAM78B. Synthetic peptide located within the following region: PSVTWAVPVSDSNVPLLTRIKRDQSFTTWLVAMNTTKEKILQTIKWRM
Formulation:	Liquid. Purified antibody supplied in 1x PBS buffer with 0.09% (w/v) sodium azide and 2% sucrose.
Concentration:	lot specific
Purification:	Affinity Purified
Conjugation:	Unconjugated
Storage:	Store at -20°C as received.
Stability:	Stable for 12 months from date of receipt.
Predicted Protein Size:	30 kDa
Gene Name:	family with sequence similarity 78 member B
Database Link:	NP_001017961 Entrez Gene 149297 Human Q5VT40
Background:	The exact function of FAM78B remains unknown.
Synonyms:	MGC131653
Note:	Immunogen Sequence Homology: Dog: 100%; Pig: 100%; Rat: 100%; Horse: 100%; Human: 100%; Mouse: 100%; Bovine: 100%; Rabbit: 100%; Guinea pig: 100%; Zebrafish: 93%


[View online »](#)

Product images:

WB Suggested Anti-FAM78B Antibody Titration:
0.2-1 ug/ml; ELISA Titer: 1: 12500; Positive
Control: 721_B cell lysate