

Product datasheet for **TA339962**

Gm527 Rabbit Polyclonal Antibody

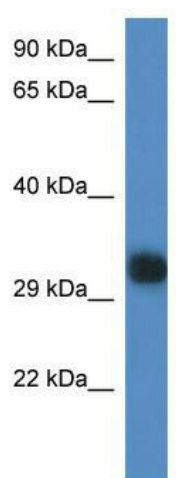
Product data:

Product Type:	Primary Antibodies
Applications:	WB
Recommended Dilution:	WB
Reactivity:	Mouse
Host:	Rabbit
Isotype:	IgG
Clonality:	Polyclonal
Immunogen:	The immunogen for anti-Gm527 antibody: synthetic peptide corresponding to a region of Mouse. Synthetic peptide located within the following region: CHGAPPFVVLNMQHWKPEDLAYVPYYLDLSDHKYLLEGATLFNKEEHHYS
Formulation:	Liquid. Purified antibody supplied in 1x PBS buffer with 0.09% (w/v) sodium azide and 2% sucrose.
Concentration:	lot specific
Purification:	Affinity Purified
Conjugation:	Unconjugated
Storage:	Store at -20°C as received.
Stability:	Stable for 12 months from date of receipt.
Predicted Protein Size:	34 kDa
Gene Name:	predicted gene 527
Database Link:	NP_001020776 Entrez Gene 217648 Mouse Q4KL13
Background:	The function remains unknown.
Synonyms:	MGC117765
Note:	Immunogen Sequence Homology: Dog: 100%; Pig: 100%; Rat: 100%; Horse: 100%; Human: 100%; Mouse: 100%; Bovine: 100%; Guinea pig: 100%; Rabbit: 93%



[View online »](#)

Product images:



WB Suggested Anti-Gm527 Antibody; Titration:
1.0 ug/ml; Positive Control: Mouse Spleen