

## Product datasheet for **TA339958**

### ASB11 Rabbit Polyclonal Antibody

#### Product data:

Product Type:	Primary Antibodies
Applications:	WB
Recommended Dilution:	WB
Reactivity:	Human
Host:	Rabbit
Isotype:	IgG
Clonality:	Polyclonal
Immunogen:	The immunogen for anti-ASB11 antibody: synthetic peptide directed towards the C terminal of human ASB11. Synthetic peptide located within the following region: GQWLDTPLHAAARQSNVEVIHLLTDYGANLKRNRNAQGKSALDLAAPKSSV
Formulation:	Liquid. Purified antibody supplied in 1x PBS buffer with 0.09% (w/v) sodium azide and 2% sucrose. <i>Note that this product is shipped as lyophilized powder to China customers.</i>
Concentration:	lot specific
Purification:	Affinity Purified
Conjugation:	Unconjugated
Storage:	Store at -20°C as received.
Stability:	Stable for 12 months from date of receipt.
Predicted Protein Size:	33 kDa
Gene Name:	ankyrin repeat and SOCS box containing 11
Database Link:	<a href="#">NP_001012428</a> <a href="#">Entrez Gene 140456 Human</a> <a href="#">Q8WXH4</a>



[View online »](#)

**Background:**

ASB11 is a member of the ankyrin repeat and SOCS box-containing (ASB) family of proteins. They contain ankyrin repeat sequence and SOCS box domain. The SOCS box serves to couple suppressor of cytokine signalling (SOCS) proteins and their binding partners with the elongin B and C complex, possibly targeting them for degradation. The protein encoded by this gene is a member of the ankyrin repeat and SOCS box-containing (ASB) family of proteins. They contain ankyrin repeat sequence and SOCS box domain. The SOCS box serves to couple suppressor of cytokine signalling (SOCS) proteins and their binding partners with the elongin B and C complex, possibly targeting them for degradation. Two transcript variants encoding different isoforms have been found for this gene.

**Synonyms:**

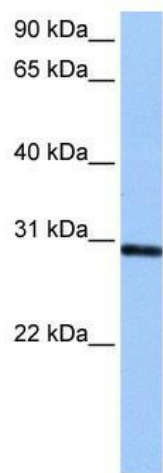
DKFZp779E2460; MGC119168; MGC119169

**Note:**

Immunogen Sequence Homology: Human: 100%; Horse: 93%; Pig: 86%; Rat: 86%; Mouse: 86%; Guinea pig: 86%

**Protein Families:**

Druggable Genome, Transmembrane

**Product images:**

WB Suggested Anti-ASB11 Antibody Titration: 0.2-1 ug/ml; Positive Control: HepG2 cell lysate