

Product datasheet for TA339957

ROPN1B Rabbit Polyclonal Antibody

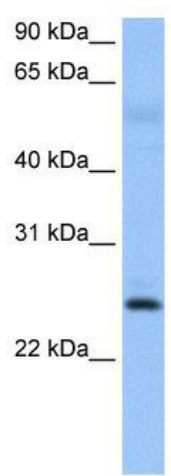
Product data:

Product Type:	Primary Antibodies
Applications:	WB
Recommended Dilution:	WB
Reactivity:	Human
Host:	Rabbit
Isotype:	IgG
Clonality:	Polyclonal
Immunogen:	The immunogen for anti-ROPN1B antibody: synthetic peptide directed towards the N terminal of human ROPN1B. Synthetic peptide located within the following region: DYFEALSRGETPPVRERSERVLCNWAELTPELLKILHSQVAGRLIIRAE
Formulation:	Liquid. Purified antibody supplied in 1x PBS buffer with 0.09% (w/v) sodium azide and 2% sucrose.
Concentration:	lot specific
Purification:	Affinity Purified
Conjugation:	Unconjugated
Storage:	Store at -20°C as received.
Stability:	Stable for 12 months from date of receipt.
Predicted Protein Size:	24 kDa
Gene Name:	rophilin associated tail protein 1B
Database Link:	NP_001012337 Entrez Gene 152015 Human Q9BZX4
Background:	ROPN1B belongs to the ropporin family and contains 1 RIIa domain. ROPN1B interacts with RHPN1 and AKAP3. It may interact with SPA17.
Synonyms:	AKAP-binding sperm protein ropporin; rophilin associated protein 1B; ropporin
Note:	Immunogen Sequence Homology: Dog: 100%; Pig: 100%; Rat: 100%; Horse: 100%; Human: 100%; Bovine: 100%; Rabbit: 100%; Mouse: 92%; Zebrafish: 83%


[View online »](#)

Protein Families: Druggable Genome

Product images:



WB Suggested Anti-ROPN1B Antibody Titration:
0.2-1 ug/ml; Positive Control: Human Muscle