

Product datasheet for **TA339956**

LIPJ Rabbit Polyclonal Antibody

Product data:

Product Type:	Primary Antibodies
Applications:	WB
Recommended Dilution:	WB
Reactivity:	Human
Host:	Rabbit
Isotype:	IgG
Clonality:	Polyclonal
Immunogen:	The immunogen for anti-LIPJ antibody: synthetic peptide directed towards the C terminal of human LIPJ. Synthetic peptide located within the following region: LNLVHYNQTTSPLYNMTNMNVATAIWNGKSDLLADPEDVNILHSEITNHI
Formulation:	Liquid. Purified antibody supplied in 1x PBS buffer with 0.09% (w/v) sodium azide and 2% sucrose. <i>Note that this product is shipped as lyophilized powder to China customers.</i>
Concentration:	lot specific
Purification:	Affinity Purified
Conjugation:	Unconjugated
Storage:	Store at -20°C as received.
Stability:	Stable for 12 months from date of receipt.
Predicted Protein Size:	42 kDa
Gene Name:	lipase family member J
Database Link:	NP_001010939 Entrez Gene 142910 Human Q5W064
Background:	LIPJ belongs to the AB hydrolase superfamily, lipase family. The exact function of LIPJ remains unknown.
Synonyms:	bA425M17.2; LIPL1

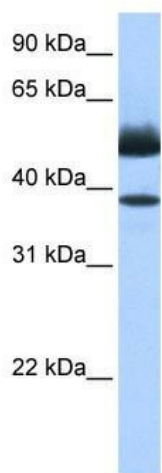


[View online »](#)

Note: Immunogen Sequence Homology: Human: 100%; Horse: 92%; Bovine: 92%; Rabbit: 85%; Rat: 83%

Protein Families: Druggable Genome

Product images:



WB Suggested Anti-LIPJ Antibody Titration: 0.2-1 ug/ml; Positive Control: Human heart