

Product datasheet for **TA339955**

C14orf174 (SAMD15) Rabbit Polyclonal Antibody

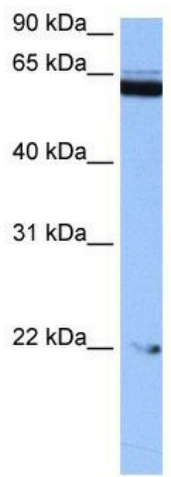
Product data:

Product Type:	Primary Antibodies
Applications:	WB
Recommended Dilution:	WB
Reactivity:	Human
Host:	Rabbit
Isotype:	IgG
Clonality:	Polyclonal
Immunogen:	The immunogen for anti-C14orf174 antibody: synthetic peptide directed towards the N terminal of human C14orf174. Synthetic peptide located within the following region: FPSEKLGESLEETDLQPPKMTKPETPEETQRESTEKKRTEPPEQARLEFL
Formulation:	Liquid. Purified antibody supplied in 1x PBS buffer with 0.09% (w/v) sodium azide and 2% sucrose.
Concentration:	lot specific
Purification:	Affinity Purified
Conjugation:	Unconjugated
Storage:	Store at -20°C as received.
Stability:	Stable for 12 months from date of receipt.
Predicted Protein Size:	77 kDa
Gene Name:	sterile alpha motif domain containing 15
Database Link:	NP_001010860 Entrez Gene 161394 Human Q9P1V8
Background:	C14orf174 contains 1 SAM (sterile alpha motif) domain. The exact functions of C14orf174 remain unknown.
Synonyms:	C14orf174; FAM15A
Note:	Immunogen Sequence Homology: Human: 100%; Yeast: 83%; Horse: 79%



[View online »](#)

Product images:



WB Suggested Anti-SAMD15 Antibody Titration:
0.2-1 ug/ml; Positive Control: HepG2 cell lysate