

Product datasheet for **TA339953**

TCP1 eta (CCT7) Rabbit Polyclonal Antibody

Product data:

Product Type:	Primary Antibodies
Applications:	WB
Recommended Dilution:	WB
Reactivity:	Human
Host:	Rabbit
Isotype:	IgG
Clonality:	Polyclonal
Immunogen:	The immunogen for anti-CCT7 antibody: synthetic peptide directed towards the middle region of human CCT7. Synthetic peptide located within the following region: RAIKNDSVVAGGGAIEMELSKYLRDYSRTIPGKQQLLIGAYAKALEIIPR
Formulation:	Liquid. Purified antibody supplied in 1x PBS buffer with 0.09% (w/v) sodium azide and 2% sucrose. <i>Note that this product is shipped as lyophilized powder to China customers.</i>
Concentration:	lot specific
Purification:	Affinity Purified
Conjugation:	Unconjugated
Storage:	Store at -20°C as received.
Stability:	Stable for 12 months from date of receipt.
Predicted Protein Size:	60 kDa
Gene Name:	chaperonin containing TCP1 subunit 7
Database Link:	NP_006420 Entrez Gene 10574 Human Q99832



[View online »](#)

Background:

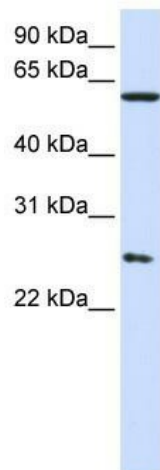
CCT7 is a molecular chaperone that is a member of the chaperonin containing TCP1 complex (CCT), also known as the TCP1 ring complex (TRiC). This complex consists of two identical stacked rings, each containing eight different proteins. Unfolded polypeptides enter the central cavity of the complex and are folded in an ATP-dependent manner. The complex folds various proteins, including actin and tubulin. This gene encodes a molecular chaperone that is a member of the chaperonin containing TCP1 complex (CCT), also known as the TCP1 ring complex (TRiC). This complex consists of two identical stacked rings, each containing eight different proteins. Unfolded polypeptides enter the central cavity of the complex and are folded in an ATP-dependent manner. The complex folds various proteins, including actin and tubulin. Alternate transcriptional splice variants encoding different isoforms have been found for this gene, but only two of them have been characterized to date.

Synonyms:

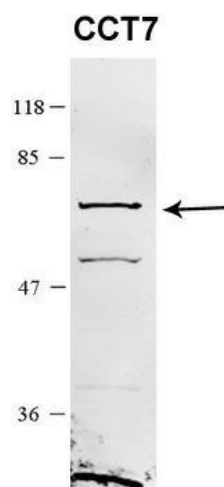
CCTETA; CCTH; NIP7-1; TCP1ETA

Note:

Immunogen Sequence Homology: Dog: 100%; Pig: 100%; Rat: 100%; Horse: 100%; Human: 100%; Mouse: 100%; Bovine: 100%; Rabbit: 100%; Zebrafish: 100%; Guinea pig: 100%; Yeast: 93%

Product images:

WB Suggested Anti-CCT7 Antibody Titration: 0.2-1 ug/ml; ELISA Titer: 1: 62500; Positive Control: 293T cell lysate CCT7 is supported by BioGPS gene expression data to be expressed in HEK293T



Sample Type: HEK 293 (10ug); Primary Dilution: 1: 1000; Secondary Antibody: conjugated goat anti-rabbit; Secondary Dilution: 1: 10, 000; Image Submitted By: Amy Gray; Brigham Young University; CCT7 is supported by BioGPS gene expression data to be express