

Product datasheet for **TA339950**

C18orf25 Rabbit Polyclonal Antibody

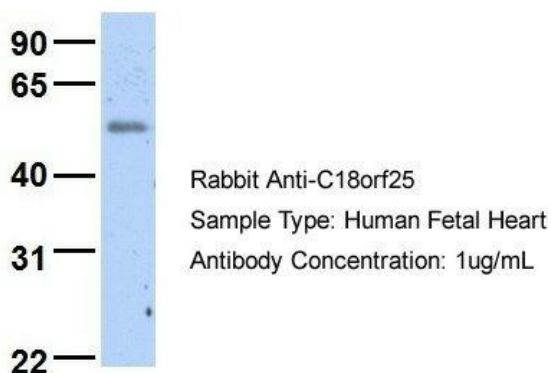
Product data:

Product Type:	Primary Antibodies
Applications:	WB
Recommended Dilution:	WB
Reactivity:	Human
Host:	Rabbit
Isotype:	IgG
Clonality:	Polyclonal
Immunogen:	The immunogen for anti-C18orf25 antibody: synthetic peptide directed towards the middle region of human C18orf25. Synthetic peptide located within the following region: STSSDDDEEVSGSSKTITAEIPGHLDPGFLASDKTSAGNAPLNEEINIA
Formulation:	Liquid. Purified antibody supplied in 1x PBS buffer with 0.09% (w/v) sodium azide and 2% sucrose.
Concentration:	lot specific
Purification:	Affinity Purified
Conjugation:	Unconjugated
Storage:	Store at -20°C as received.
Stability:	Stable for 12 months from date of receipt.
Predicted Protein Size:	37 kDa
Gene Name:	chromosome 18 open reading frame 25
Database Link:	NP_001008240 Entrez Gene 147339 Human Q96B23
Background:	The exact function of C18orf25 remains unknown.
Synonyms:	ARKL1; RNF111L1
Note:	Immunogen Sequence Homology: Dog: 100%; Pig: 100%; Rat: 100%; Horse: 100%; Human: 100%; Mouse: 100%; Bovine: 100%; Rabbit: 100%

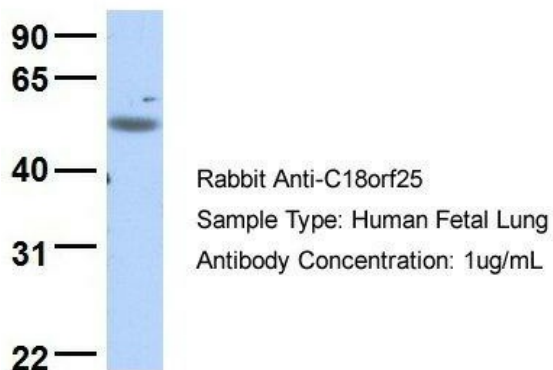


[View online »](#)

Product images:

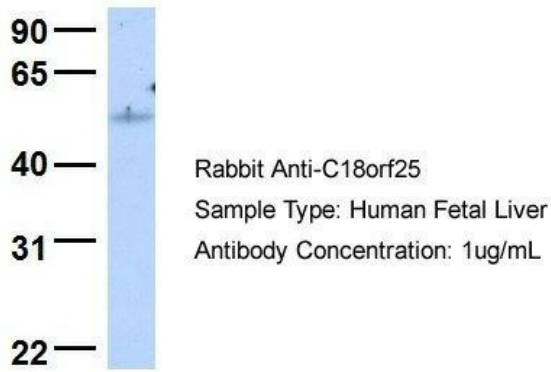
C18orf25

Host: Rabbit; Target Name: C18orf25; Sample
Tissue: Human Fetal Heart; Antibody Dilution: 1.0
ug/ml

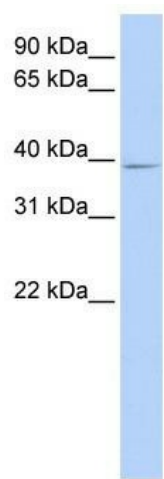
C18orf25

Host: Rabbit; Target Name: C18orf25; Sample
Tissue: Human Fetal Lung; Antibody Dilution: 1.0
ug/ml

C18orf25



Host: Rabbit; Target Name: C18orf25; Sample Tissue: Human Fetal Liver; Antibody Dilution: 1.0 ug/ml



WB Suggested Anti-C18orf25 Antibody Titration: 0.2-1 ug/ml; ELISA Titer: 1: 62500; Positive Control: 721_B cell lysate C18orf25 is strongly supported by BioGPS gene expression data to be expressed in Human 721_B cells